

Pavement Improvement Project
Cattaraugus County Road 19 (5 Mile Road) –
Resurfacing

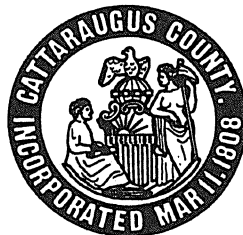
ADDENDUM No. 1

CR 19 – 5 Mile Road; between Humphrey Bridge 32 (BIN
3321930) and NY 16
Cattaraugus County
Towns of Humphrey, Hinsdale, Ischua and Franklinville

BID NO. 37

Prepared by:

Cattaraugus County
Department of Public Works
8810 Route 242
Little Valley, NY 14755



APRIL 25, 2024

The Following are plans and bid proposal booklet changes:

General Provisions & Bid Proposal Booklet:

1. **Remove** Section A - Unit Price Bid Schedule (A-1 to A-16). **Replace** with attached Unit Price Bid Schedule (A-1 to A-16) attached.
2. **Remove** Section F – Special Notes – Asphalt & Fuel Price Adjustment Notes (162 of 164). **Replace** with attached Asphalt & Fuel Price Adjustment Notes

In the Plan Set, CR 19 Pavement Rehabilitation:

1. **Remove** sheet TS-01 – Replace with attached sheet TS-01. Added Pavement Trench Restoration Detail.
2. **Remove** sheet MD-01. **Replace** with attached sheet MD-01. Updated Tack Coat Item.
3. **Remove** sheet CUL-03. **Replace** with attached sheet CUL-03. Updated concrete pipe pay item.
4. **Remove** sheet CUL-05. **Replace** with attached sheet CUL-05. Updated concrete pipe pay item.
5. **Remove** sheet CUL-13. **Replace** with attached sheet CUL-13. Updated concrete pipe pay item.
6. **Remove** sheet CUL-15. **Replace** with attached sheet CUL-15. Updated concrete pipe pay item.
7. **Remove** sheet CUL-16. **Replace** with attached sheet CUL-16. Updated concrete pipe pay item.
8. **Remove** sheet CUL-18. **Replace** with attached sheet CUL-18. Updated concrete pipe pay item.
9. **Remove** sheet CUL-19. **Replace** with attached sheet CUL-19. Updated concrete pipe pay item.
10. **Remove** sheet DRT-01. **Replace** with attached sheet DRT-01. Updated concrete pipe pay item.
11. **Remove** sheet DRT-02. **Replace** with attached sheet DRT-02. Updated concrete pipe pay item.
12. **Remove** sheet EOQ-01. **Replace** with attached sheet EOQ-01. Updated concrete pipe pay item.

In both General Provisions & Bid Proposal Booklet and Plan Set, the following pay item revisions apply:

1. **Add** Item 201.06000007 - GRUBBING PREVIOUSLY CLEARED LAND, Unit LS, Qty 1
2. **Update** Item 407.0102 quantity – 9250 GAL
3. **Remove** Item 407.0103 – Straight Tack Coat
4. **Update** Item 416.21000018 quantity – 172,800 GAL
5. **Remove** Item 603.6105 – REINFORCED CONCRETE PIPE CLASS IV, 24 INCH DIAMETER. **Replace** with Item 603.6005 REINFORCED CONCRETE PIPE CLASS III, 24 INCH DIAMETER. Quantity remains the same.
6. **Remove** Item 603.6107 – REINFORCED CONCRETE PIPE CLASS IV, 30 INCH DIAMETER. **Replace** with Item 603.6007 REINFORCED CONCRETE PIPE CLASS III, 30 INCH DIAMETER. Quantity remains the same.
7. **Remove** Item 603.6109 – REINFORCED CONCRETE PIPE CLASS IV, 36 INCH DIAMETER. **Replace** with Item 603.6009 REINFORCED CONCRETE PIPE CLASS III, 36 INCH DIAMETER. Quantity remains the same.
8. **Remove** Item 603.6111 – REINFORCED CONCRETE PIPE CLASS IV, 48 INCH DIAMETER. **Replace** with Item 603.6011 REINFORCED CONCRETE PIPE CLASS III, 48 INCH DIAMETER. Quantity remains the same.
9. The contractor may **Substitute** Item 603.6707 - REINFORCED CONCRETE HORIZONTAL ELLIPTICAL PIPE, CLASS HEIII 32" RISE, 49" SPAN if material not readily available **with** Item 603.6708 - REINFORCED CONCRETE HORIZONTAL ELLIPTICAL PIPE, CLASS HE III, 34" RISE, 53" SPAN. Substitute item to be paid under Item 603.6707 as priced in the Unit Price Bid Schedule.
10. The contractor may **Substitute** Item 603.63060315 – PRECAST CONCRETE BOX CULVERT, 6 FOOT SPAN, 3 FOOT RISE, if material is not readily available **with** Item 603.6711 REINFORCED CONCRETE HORIZONTAL ELLIPTICAL PIPE, CLASS HE III 48" RISE, 76" SPAN, and Item 603.671100008 REINFORCED CONCRETE HORIZONTAL ELLIPTICAL PIPE ENDSECTION, CLASS HE III 48 INCH RISE X 76 INCH SPAN, 2 EACH. The installed length of substitute elliptical pipe and end sections items shall equal 54 LF. The substitute elliptical pipe shall be buried and filled to provide the same pipe height of opening as the proposed box culvert. Substitute items to be paid under item 603.6060315 as priced in the Unit Price Bid Schedule.
11. The Contractor may **Substitute** Item 603.63070315 – PRECAST CONCRETE BOX CULVERT (FILL HEIGHT LESS THAN 24 IN) 7 FOOT SPAN, 3 FOOT RISE, if material is not readily available **with** 603.6613 REINFORCED CONCRETE HORIZONTAL ELLIPTICAL PIPE, CLASS HE III 58" RISE, 91" SPAN and Item 603.671300008 - REINFORCED CONCRETE HORIZONTAL ELLIPTICAL PIPE ENDSECTION, CLASS HEIII 58" RISE, 91" SPAN, 2 EACH, The installed length of substitute elliptical pipe

and end sections items shall equal 53 LF. The substitute elliptical pipe shall be buried and filled to provide the same pipe height of opening as the proposed box culvert. Substitute items to be paid under item 603.6070315 as priced in the Unit Price Bid Schedule.

12. **Remove** Item 697.03 – FIELD CHANGE PAYMENT

**ALL BIDDERS MUST RETURN THIS ADDENDUM WITH THE BID AND RECORD THIS
ADDENDUM IN SECTION B ON SHEET B-2 IN THE BID PROPOSAL BOOK.**

**IN ADDITION, PLEASE ACKNOWLEDGE RECEIPT OF ADDENDUM 1 IMMEDIATELY BY
PROVIDING THE INFORMATION BELOW AND FAXING THIS SHEET TO:**

Cattaraugus County
Department of Public Works
(716)938-2754

The undersigned bidder acknowledges receipt and understanding of Addendum No. 1

Company Name: _____ Signed: _____

Date _____ Print Name of Signatory: _____

SECTION A

UNIT PRICE BID SCHEDULE

The Contractor shall furnish all materials, equipment, tools and labor of every kind required to complete the Pavement Improvement Project CR 19 - Resurfacing in Cattaraugus County, Towns of Humphrey, Hinsdale, Ischua and Franklinville, and perform all other work and incidental work in the most substantial and workmanlike manner, and do everything required by the Contract Documents as defined herein.

The total bid price shall be the sum of all materials, installation and labor costs as defined herein. Each unit bid price shall be entered both in words and numerically in the spaces provided. In the event of a discrepancy the words will be used for tabulation purposes.

BY SIGNING THE BID FORM, BIDDER PROPOSES TO COMPLETE: PAVEMENT IMPROVEMENT PROJECT CR 19 RESURFACING
 IN ACCORDANCE WITH THE CATTARAUGUS COUNTY STANDARD CONSTRUCTION CONTRACT DOCUMENTS
 AND THE ATTACHED CONSTRUCTION CONTRACT DOCUMENTS AT THE FOLLOWING UNIT PRICES

ITEM NUMBER	ESTIMATED QUANTITY	ITEM DESCRIPTION UNIT BID PRICE WRITTEN IN WORDS	UNIT BID PRICE		AMOUNT OF BID	
			DOLLARS	CENTS	DOLLARS	CENTS
201.06000007	1 LS	GRUBBING PREVIOUSLY CLEARED LAND For: _____ Dollars _____ Cents				
203.02	340 CY	UNCLASSIFIED EXCAVATION AND DISPOSAL For: _____ Dollars _____ Cents				
203.03	319 CY	EMBANKMENT IN PLACE For: _____ Dollars _____ Cents				
203.07	1805 CY	SELECT GRANULAR FILL For: _____ Dollars _____ Cents				
203.21	113 CY	SELECT STRUCTURE FILL For: _____ Dollars _____ Cents				
203.24010017	3099 TON	SHOULDER BACKUP MATERIAL For: _____ Dollars _____ Cents				
206.01	602 CY	STRUCTURE EXCAVATION For: _____ Dollars _____ Cents				

BY SIGNING THE BID FORM, BIDDER PROPOSES TO COMPLETE: PAVEMENT IMPROVEMENT PROJECT CR 19 RESURFACING
 IN ACCORDANCE WITH THE CATTARAUGUS COUNTY STANDARD CONSTRUCTION CONTRACT DOCUMENTS
 AND THE ATTACHED CONSTRUCTION CONTRACT DOCUMENTS AT THE FOLLOWING UNIT PRICES

ITEM NUMBER	ESTIMATED QUANTITY	ITEM DESCRIPTION UNIT BID PRICE WRITTEN IN WORDS	UNIT BID PRICE		AMOUNT OF BID	
			DOLLARS	CENTS	DOLLARS	CENTS
206.0201	2505 CY	TRENCH AND CULVERT EXCAVATION For: _____ Dollars _____ Cents				
207.20	176 SY	GEOTEXTILE BEDDING For: _____ Dollars _____ Cents				
304.15	470 CY	SUBBASE COURSE, OPTIONAL TYPE For: _____ Dollars _____ Cents				
404.000011	17 QU	PLANT PRODUCTION QUALITY ADJUSTMENT TO WMA ITEMS For: _____ Dollars SUBSECTION 102-03 _____ Cents	90 00		1530 00	
404.097301	7551 TON	9.5 F3 TOP COURSE ASPHALT, 70 SERIES COMPACTION For: _____ Dollars _____ Cents				
404.197901	153 TON	19 F9 BINDER COURSE ASPHALT, 70 SERIES COMPACTION For: _____ Dollars _____ Cents				
404.377901	114 TON	37.5 F9 BASE COURSE WMA, 70 SERIES COMPACTION For: _____ Dollars _____ Cents				

BY SIGNING THE BID FORM, BIDDER PROPOSES TO COMPLETE: PAVEMENT IMPROVEMENT PROJECT CR 19 RESURFACING
 IN ACCORDANCE WITH THE CATTARAUGUS COUNTY STANDARD CONSTRUCTION CONTRACT DOCUMENTS
 AND THE ATTACHED CONSTRUCTION CONTRACT DOCUMENTS AT THE FOLLOWING UNIT PRICES

ITEM NUMBER	ESTIMATED QUANTITY	ITEM DESCRIPTION UNIT BID PRICE WRITTEN IN WORDS	UNIT BID PRICE		AMOUNT OF BID	
			DOLLARS	CENTS	DOLLARS	CENTS
407.0102	9250 GAL	DILUTED TACK COAT For: _____ Dollars _____ Cents				
416.10000018	87372 SY	COLD RECYCLING ASPHALT CONCRETE - COARSE For: _____ Dollars _____ Cents				
416.21000018	172800 GAL	POLYMER MODIFIED ASPHALT EMULSION For: _____ Dollars _____ Cents				
416.30000018	8738 GAL	FOG SEAL For: _____ Dollars _____ Cents				
418.7603	31733 LF	ASPHALT PAVEMENT JOINT ADHESIVE For: _____ Dollars _____ Cents				
490.10	91674 SY	PRODUCTION COLD MILLING OF BITUMINOUS CONCRETE For: _____ Dollars _____ Cents				
490.30	185 SY	MISCELLANEOUS COLD MILLING OF BITUMINOUS CONCRETE For: _____ Dollars _____ Cents				

BY SIGNING THE BID FORM, BIDDER PROPOSES TO COMPLETE: PAVEMENT IMPROVEMENT PROJECT CR 19 RESURFACING
 IN ACCORDANCE WITH THE CATTARAUGUS COUNTY STANDARD CONSTRUCTION CONTRACT DOCUMENTS
 AND THE ATTACHED CONSTRUCTION CONTRACT DOCUMENTS AT THE FOLLOWING UNIT PRICES

ITEM NUMBER	ESTIMATED QUANTITY	ITEM DESCRIPTION UNIT BID PRICE WRITTEN IN WORDS	UNIT BID PRICE		AMOUNT OF BID	
			DOLLARS	CENTS	DOLLARS	CENTS
552.17	11419 SF	SHIELDS AND SHORING For: _____ Dollars _____ Cents				
553.030001	1 EACH	TEMPORARY WATERWAY DIVERSION STRUCTURE For: _____ Dollars _____ Cents				
553.030002	1 EACH	TEMPORARY WATERWAY DIVERSION STRUCTURE For: _____ Dollars _____ Cents				
553.030003	1 EACH	TEMPORARY WATERWAY DIVERSION STRUCTURE For: _____ Dollars _____ Cents				
553.030004	1 EACH	TEMPORARY WATERWAY DIVERSION STRUCTURE For: _____ Dollars _____ Cents				
553.030005	1 EACH	TEMPORARY WATERWAY DIVERSION STRUCTURE For: _____ Dollars _____ Cents				
553.030006	1 EACH	TEMPORARY WATERWAY DIVERSION STRUCTURE For: _____ Dollars _____ Cents				

BY SIGNING THE BID FORM, BIDDER PROPOSES TO COMPLETE: PAVEMENT IMPROVEMENT PROJECT CR 19 RESURFACING
 IN ACCORDANCE WITH THE CATTARAUGUS COUNTY STANDARD CONSTRUCTION CONTRACT DOCUMENTS
 AND THE ATTACHED CONSTRUCTION CONTRACT DOCUMENTS AT THE FOLLOWING UNIT PRICES

ITEM NUMBER	ESTIMATED QUANTITY	ITEM DESCRIPTION UNIT BID PRICE WRITTEN IN WORDS	UNIT BID PRICE		AMOUNT OF BID	
			DOLLARS	CENTS	DOLLARS	CENTS
553.030007	1 EACH	TEMPORARY WATERWAY DIVERSION STRUCTURE For: _____ Dollars _____ Cents				
553.030008	1 EACH	TEMPORARY WATERWAY DIVERSION STRUCTURE For: _____ Dollars _____ Cents				
553.030009	1 EACH	TEMPORARY WATERWAY DIVERSION STRUCTURE For: _____ Dollars _____ Cents				
553.030010	1 EACH	TEMPORARY WATERWAY DIVERSION STRUCTURE For: _____ Dollars _____ Cents				
553.030011	1 EACH	TEMPORARY WATERWAY DIVERSION STRUCTURE For: _____ Dollars _____ Cents				
553.030012	1 EACH	TEMPORARY WATERWAY DIVERSION STRUCTURE For: _____ Dollars _____ Cents				
553.030013	1 EACH	TEMPORARY WATERWAY DIVERSION STRUCTURE For: _____ Dollars _____ Cents				

BY SIGNING THE BID FORM, BIDDER PROPOSES TO COMPLETE: PAVEMENT IMPROVEMENT PROJECT CR 19 RESURFACING
 IN ACCORDANCE WITH THE CATTARAUGUS COUNTY STANDARD CONSTRUCTION CONTRACT DOCUMENTS
 AND THE ATTACHED CONSTRUCTION CONTRACT DOCUMENTS AT THE FOLLOWING UNIT PRICES

ITEM NUMBER	ESTIMATED QUANTITY	ITEM DESCRIPTION UNIT BID PRICE WRITTEN IN WORDS	UNIT BID PRICE		AMOUNT OF BID	
			DOLLARS	CENTS	DOLLARS	CENTS
553.030014	1 EACH	TEMPORARY WATERWAY DIVERSION STRUCTURE For: _____ Dollars _____ Cents				
553.030015	1 EACH	TEMPORARY WATERWAY DIVERSION STRUCTURE For: _____ Dollars _____ Cents				
553.030016	1 EACH	TEMPORARY WATERWAY DIVERSION STRUCTURE For: _____ Dollars _____ Cents				
553.030017	1 EACH	TEMPORARY WATERWAY DIVERSION STRUCTURE For: _____ Dollars _____ Cents				
555.08	3 CY	FOOTING CONCRETE, CLASS HP For: _____ Dollars _____ Cents				
555.09	7 CY	CONCRETE FOR STRUCTURES, CLASS HP For: _____ Dollars _____ Cents				
556.0202	1439 LB	EPOXY-COATED BAR REINFORCEMENT FOR STRUCTURES For: _____ Dollars _____ Cents				

BY SIGNING THE BID FORM, BIDDER PROPOSES TO COMPLETE: PAVEMENT IMPROVEMENT PROJECT CR 19 RESURFACING
 IN ACCORDANCE WITH THE CATTARAUGUS COUNTY STANDARD CONSTRUCTION CONTRACT DOCUMENTS
 AND THE ATTACHED CONSTRUCTION CONTRACT DOCUMENTS AT THE FOLLOWING UNIT PRICES

ITEM NUMBER	ESTIMATED QUANTITY	ITEM DESCRIPTION UNIT BID PRICE WRITTEN IN WORDS	UNIT BID PRICE		AMOUNT OF BID	
			DOLLARS	CENTS	DOLLARS	CENTS
580.01	11 CY	REMOVAL OF STRUCTURAL CONCRETE For: _____ Dollars _____ Cents				
586.0201	22 EACH	DRILLING AND GROUTING BOLTS OR REINFORCEMENT BARS For: _____ Dollars _____ Cents				
595.50000018	636 SF	SHEET-APPLIED WATERPROOFING MEMBRANE For: _____ Dollars _____ Cents				
603.541016	8 EACH	CORRUGATED ALUMINUM END SECTIONS, PIPE 12 INCHDIAMETER (2-2/3" X 1/2" CORRUGATION) 16 GA For: _____ Dollars _____ Cents				
603.541116	9 EACH	CORRUGATED ALUMINUM END SECTIONS, PIPE 15 INCHDIAMETER (2-2/3" X 1/2" CORRUGATION) 16 GAUGE For: _____ Dollars _____ Cents				
603.541216	34 EACH	CORRUGATED ALUMINUM END SECTIONS, PIPE 18 INCHDIAMETER (2-2/3" X 1/2" CORRUGATION) 16 GAUGE For: _____ Dollars _____ Cents				
603.541316	2 EACH	CORRUGATED ALUMINUM END SECTIONS, PIPE 21 INCHDIAMETER (2-2/3" X 1/2" CORRUGATION) 16 GAUGE For: _____ Dollars _____ Cents				

BY SIGNING THE BID FORM, BIDDER PROPOSES TO COMPLETE: PAVEMENT IMPROVEMENT PROJECT CR 19 RESURFACING
 IN ACCORDANCE WITH THE CATTARAUGUS COUNTY STANDARD CONSTRUCTION CONTRACT DOCUMENTS
 AND THE ATTACHED CONSTRUCTION CONTRACT DOCUMENTS AT THE FOLLOWING UNIT PRICES

ITEM NUMBER	ESTIMATED QUANTITY	ITEM DESCRIPTION UNIT BID PRICE WRITTEN IN WORDS	UNIT BID PRICE		AMOUNT OF BID	
			DOLLARS	CENTS	DOLLARS	CENTS
603.541414	2 EACH	CORRUGATED ALUMINUM END SECTIONS, PIPE 24 INCH DIAMETER (2-2/3" X 1/2" CORRUGATION) 14 GA For: _____ Dollars Cents _____				
603.541614	8 EACH	CORRUGATED ALUMINUM END SECTIONS, PIPE 30 INCH DIAMETER (2-2/3" X 1/2" CORRUGATION) 14 GA For: _____ Dollars Cents _____				
603.541812	9 EACH	CORRUGATED ALUMINUM END SECTIONS, PIPE 36 INCH DIAMETER (3" X 1" CORRUGATION) 12 GAUGE For: _____ Dollars Cents _____				
603.541912	3 EACH	CORRUGATED ALUMINUM END SECTIONS, PIPE 42 INCH DIAMETER (3" X 1" CORRUGATION) 12 GAUGE For: _____ Dollars Cents _____				
603.6005	40 LF	REINFORCED CONCRETE PIPE CLASS III, 24 INCH DIAMETER For: _____ Dollars Cents _____				
603.6007	52 LF	REINFORCED CONCRETE PIPE CLASS III, 30 INCH DIAMETER For: _____ Dollars Cents _____				
603.6009	198 LF	REINFORCED CONCRETE PIPE CLASS III, 36 INCH DIAMETER For: _____ Dollars Cents _____				

BY SIGNING THE BID FORM, BIDDER PROPOSES TO COMPLETE: PAVEMENT IMPROVEMENT PROJECT CR 19 RESURFACING
 IN ACCORDANCE WITH THE CATTARAUGUS COUNTY STANDARD CONSTRUCTION CONTRACT DOCUMENTS
 AND THE ATTACHED CONSTRUCTION CONTRACT DOCUMENTS AT THE FOLLOWING UNIT PRICES

ITEM NUMBER	ESTIMATED QUANTITY	ITEM DESCRIPTION UNIT BID PRICE WRITTEN IN WORDS	UNIT BID PRICE		AMOUNT OF BID	
			DOLLARS	CENTS	DOLLARS	CENTS
603.6011	56 LF	REINFORCED CONCRETE PIPE CLASS III, 48 INCH DIAMETER For: _____ Dollars _____ Cents				
603.63060315	54 LF	PRECAST CONCRETE BOX CULVERT, 6 FOOT SPAN, 3 FOOT RISE For: _____ Dollars _____ Cents				
603.63070315	53 LF	PRECAST CONCRETE BOX CULVERT (FILL HEIGHT LESS THAN 24 IN) 7 FOOT SPAN, 3 FOOT RISE For: _____ Dollars _____ Cents				
603.6707	58 LF	REINFORCED CONCRETE HORIZONTAL ELLIPTICAL PIPE, CLASS HE III 32" RISE, 49" SPAN For: _____ Dollars _____ Cents				
603.67070008	2 EACH	REINFORCED CONCRETE HORIZONTAL ELLIPTICAL PIPE ENDSECTION, CLASS HE III 32 INCH RISE X 49 INCH SPAN For: _____ Dollars _____ Cents				
603.7301	2 EACH	REINFORCED CONCRETE PIPE END SECTIONS 12 INCH DIAMETER For: _____ Dollars _____ Cents				
603.7305	2 EACH	REINFORCED CONCRETE PIPE END SECTIONS 24 INCH DIAMETER For: _____ Dollars _____ Cents				

BY SIGNING THE BID FORM, BIDDER PROPOSES TO COMPLETE: PAVEMENT IMPROVEMENT PROJECT CR 19 RESURFACING
 IN ACCORDANCE WITH THE CATTARAUGUS COUNTY STANDARD CONSTRUCTION CONTRACT DOCUMENTS
 AND THE ATTACHED CONSTRUCTION CONTRACT DOCUMENTS AT THE FOLLOWING UNIT PRICES

ITEM NUMBER	ESTIMATED QUANTITY	ITEM DESCRIPTION UNIT BID PRICE WRITTEN IN WORDS	UNIT BID PRICE		AMOUNT OF BID	
			DOLLARS	CENTS	DOLLARS	CENTS
603.7307	1 EACH	REINFORCED CONCRETE PIPE END SECTIONS 30 INCH DIAMETER For: _____ Dollars _____ Cents				
603.7309	7 EACH	REINFORCED CONCRETE PIPE END SECTIONS 36 INCH DIAMETER For: _____ Dollars _____ Cents				
603.7311	2 EACH	REINFORCED CONCRETE PIPE END SECTIONS 48 INCH DIAMETER For: _____ Dollars _____ Cents				
603.9815	326 LF	SMOOTH INTERIOR CORRUGATED POLYETHYLENE CULVERT AND STORM DRAIN 15 INCH DIAMETER For: _____ Dollars _____ Cents				
603.9824	380 LF	SMOOTH INTERIOR CORRUGATED POLYETHYLENE CULVERT AND STORM DRAIN 24 INCH DIAMETER For: _____ Dollars _____ Cents				
603.9830	371 LF	SMOOTH INTERIOR CORRUGATED POLYETHYLENE CULVERT AND STORM DRAIN 30 INCH DIAMETER For: _____ Dollars _____ Cents				
603.9842	75 LF	SMOOTH INTERIOR POLYETHYLENE CULVERT PIPE AND STORM DRAIN PIPE - 42 INCH DIAMETER For: _____ Dollars _____ Cents				

BY SIGNING THE BID FORM, BIDDER PROPOSES TO COMPLETE: PAVEMENT IMPROVEMENT PROJECT CR 19 RESURFACING
 IN ACCORDANCE WITH THE CATTARAUGUS COUNTY STANDARD CONSTRUCTION CONTRACT DOCUMENTS
 AND THE ATTACHED CONSTRUCTION CONTRACT DOCUMENTS AT THE FOLLOWING UNIT PRICES

ITEM NUMBER	ESTIMATED QUANTITY	ITEM DESCRIPTION UNIT BID PRICE/WITTEN IN WORDS	UNIT BID PRICE		AMOUNT OF BID	
			DOLLARS	CENTS	DOLLARS	CENTS
604.300603	46 LF	RECTANGULAR DRAINAGE STRUCTURE TYPE F FOR #3 WELDED FRAME For: _____ Dollars _____ Cents				
604.301103	15.4 LF	RECTANGULAR DRAINAGE STRUCTURE TYPE K FOR #3 WELDED FRAME For: _____ Dollars _____ Cents				
607.97000008	115 LF	REMOVE AND RESET EXISTING FENCE For: _____ Dollars _____ Cents				
608.000013	2 QU	Plant Production Quality Adjustment to Asphalt Sidewalks, Driveways, Bicycle Paths, and Vegetation Control Strips For: _____ Dollars SUBSECTION 102-03 _____ Cents	90 00		180 00	
608.0101	2 CY	CONCRETE SIDEWALKS AND DRIVEWAYS For: _____ Dollars _____ Cents				
608.020102	30 TON	HOT MIX ASPHALT (HMA) SIDEWALKS, DRIVEWAYS AND BICYCLE PATHS, AND VEGETATION CONTROL STRIPS For: _____ Dollars _____ Cents				
610.1605	3423 SY	TURF ESTABLISHMENT - PERFORMANCE For: _____ Dollars _____ Cents				

BY SIGNING THE BID FORM, BIDDER PROPOSES TO COMPLETE: PAVEMENT IMPROVEMENT PROJECT CR 19 RESURFACING
 IN ACCORDANCE WITH THE CATTARAUGUS COUNTY STANDARD CONSTRUCTION CONTRACT DOCUMENTS
 AND THE ATTACHED CONSTRUCTION CONTRACT DOCUMENTS AT THE FOLLOWING UNIT PRICES

ITEM NUMBER	ESTIMATED QUANTITY	ITEM DESCRIPTION UNIT BID PRICE WRITTEN IN WORDS	UNIT BID PRICE		AMOUNT OF BID	
			DOLLARS	CENTS	DOLLARS	CENTS
613.04000001	30 CY	STOCKPILING AND PLACING EXISTING STREAM BED MATERIALS For: _____ Dollars _____ Cents				
619.01	1 LS	BASIC WORK TRAFFIC CONTROL For: _____ Dollars _____ Cents				
619.27	8 EACH	MAILBOXES For: _____ Dollars _____ Cents				
620.03	255 CY	STONE FILLING (LIGHT) For: _____ Dollars _____ Cents				
620.04	110 CY	STONE FILLING (MEDIUM) For: _____ Dollars _____ Cents				
620.0802	173 CY	BEDDING MATERIAL, TYPE 2 For: _____ Dollars _____ Cents				
621.01	1060 LF	CLEANING CULVERTS WITH SPAN OF 50 IN. OR LESS For: _____ Dollars _____ Cents				

BY SIGNING THE BID FORM, BIDDER PROPOSES TO COMPLETE: PAVEMENT IMPROVEMENT PROJECT CR 19 RESURFACING
 IN ACCORDANCE WITH THE CATTARAUGUS COUNTY STANDARD CONSTRUCTION CONTRACT DOCUMENTS
 AND THE ATTACHED CONSTRUCTION CONTRACT DOCUMENTS AT THE FOLLOWING UNIT PRICES

ITEM NUMBER	ESTIMATED QUANTITY	ITEM DESCRIPTION UNIT BID PRICE WRITTEN IN WORDS	UNIT BID PRICE		AMOUNT OF BID	
			DOLLARS	CENTS	DOLLARS	CENTS
621.51000015	358 LF	GRADING CLEANING AND RESHAPING EXISTING DITCHES For: _____ Dollars _____ Cents				
623.03	1000 TON	CRUSHED STONE (BY WEIGHT) For: _____ Dollars _____ Cents				
623.11	64 CY	CRUSHED GRAVEL (IN-PLACE MEASURE) For: _____ Dollars _____ Cents				
625.01	1 LS	SURVEY OPERATIONS For: _____ Dollars _____ Cents				
627.50140008	399 LF	CUTTING PAVEMENT For: _____ Dollars _____ Cents				
637.11	12 MNTH	ENGINEER'S FIELD OFFICE - TYPE 1 For: _____ Dollars _____ Cents				
637.34	2500 DC	OFFICE TECHNOLOGY AND SUPPLIES For: <u>FIXED PRICE: SEE SPECIFICATION AND</u> Dollars <u>SUBSECTION 102-03</u> Cents	fixed		2500	00

BY SIGNING THE BID FORM, BIDDER PROPOSES TO COMPLETE: PAVEMENT IMPROVEMENT PROJECT CR 19 RESURFACING
 IN ACCORDANCE WITH THE CATTARAUGUS COUNTY STANDARD CONSTRUCTION CONTRACT DOCUMENTS
 AND THE ATTACHED CONSTRUCTION CONTRACT DOCUMENTS AT THE FOLLOWING UNIT PRICES

ITEM NUMBER	ESTIMATED QUANTITY	ITEM DESCRIPTION UNIT BID PRICE WRITTEN IN WORDS	UNIT BID PRICE		AMOUNT OF BID	
			DOLLARS	CENTS	DOLLARS	CENTS
640.20	63466 LF	WHITE PAINT REFLECTORIZED PAVEMENT STRIPES - 20 MILS For: _____ Dollars _____ Cents				
640.21	63466 LF	YELLOW PAINT REFLECTORIZED PAVEMENT STRIPES - 20 MILS For: _____ Dollars _____ Cents				
655.1003	11 EACH	WELDED FRAME AND RECTANGULAR GRATE 3 For: _____ Dollars _____ Cents				
698.04	11662 DC	ASPHALT PRICE ADJUSTMENT For: FIXED PRICE: SEE SPECIFICATION AND SUBSECTION 102-03			11662	00
698.05	1818 DC	FUEL PRICE ADJUSTMENT For: FIXED PRICE: SEE SPECIFICATION AND SUBSECTION 102-03				1818
699.040001	1 LS	MOBILIZATION For: _____ Dollars _____ Cents				

BY SIGNING THE BID FORM, BIDDER PROPOSES TO COMPLETE: PAVEMENT IMPROVEMENT PROJECT CR 19 RESURFACING
 IN ACCORDANCE WITH THE CATTARAUGUS COUNTY STANDARD CONSTRUCTION CONTRACT DOCUMENTS
 AND THE ATTACHED CONSTRUCTION CONTRACT DOCUMENTS AT THE FOLLOWING UNIT PRICES

ITEM NUMBER	ESTIMATED QUANTITY	ITEM DESCRIPTION UNIT BID PRICE WRITTEN IN WORDS	UNIT BID PRICE		AMOUNT OF BID	
			DOLLARS	CENTS	DOLLARS	CENTS
TOTAL BID:			\$			

_____ Dollars
 _____ Cents

COMPANY NAME: _____

SIGNATURE: _____

Date: _____

SPECIAL NOTES (Addendum No 1)

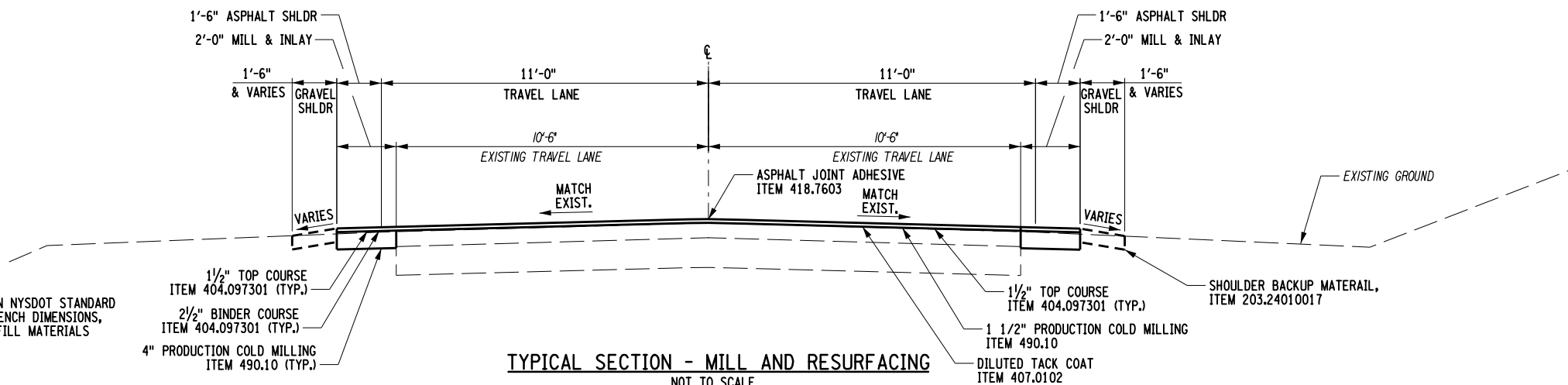
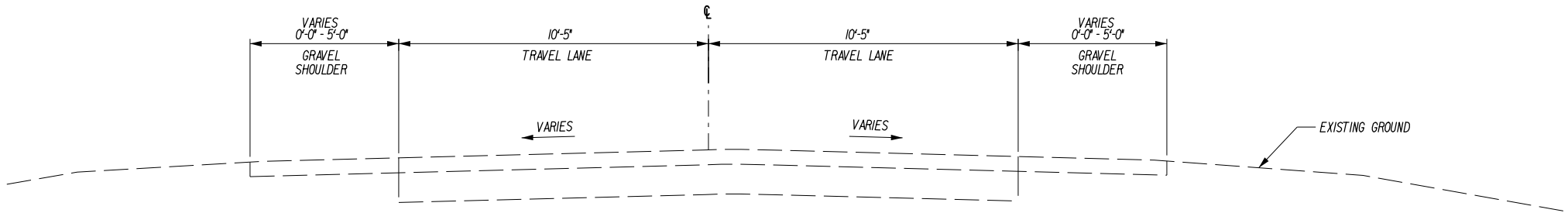
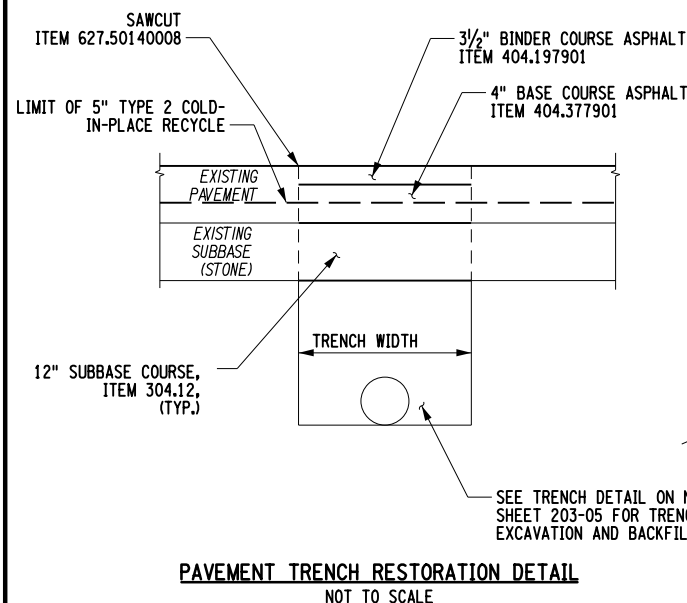
ASPHALT PRICE ADJUSTMENT, ITEM 698.04

For eligible items and conversion factors, reference NYSDOT Engineering Bulletin EB 24-020-FUEL, ASPHALT & STEEL PRICE ADJUSTMENTS (MAY 2024). Instructions for calculating these payments are contained in Section 698 of the Standard Specifications

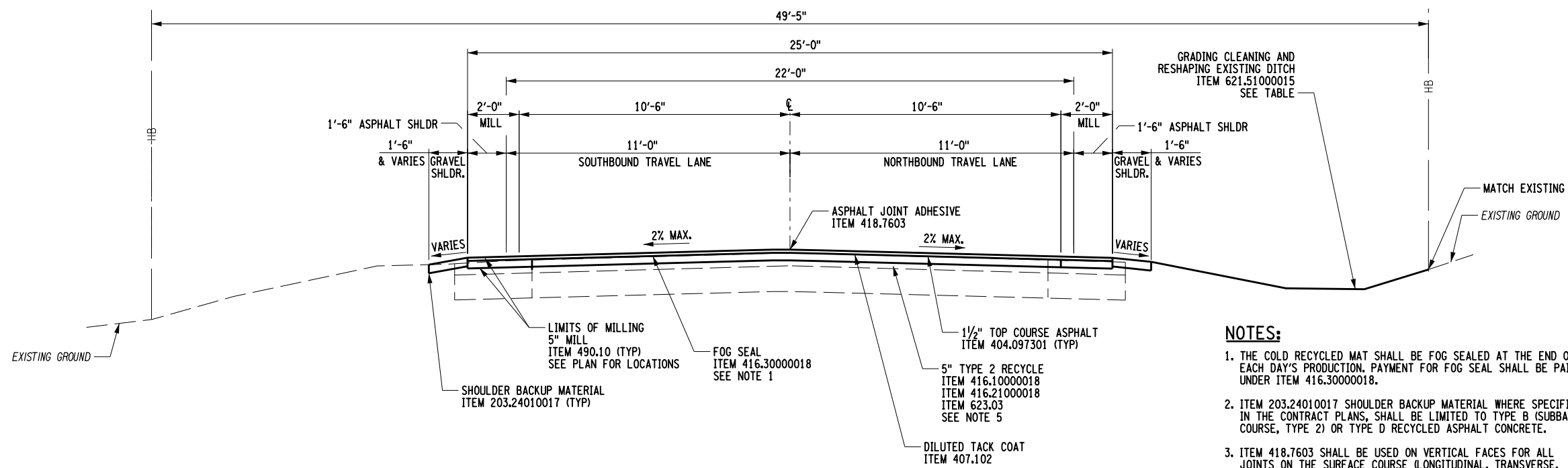
FUEL PRICE ADJUSTMENT, ITEM 698.05

For eligible items and conversion factors, reference NYSDOT Engineering Bulletin EB 24-020 - FUEL, ASPHALT & STEEL PRICE ADJUSTMENTS (MAY 2024). Instructions for calculating these payments are contained in Section 698 of the Standard Specifications

H:\Projects\210945-01-CR19_Preliminary_Design\Eng\CAD\CUT\210945_cph_typ_TS01.dgn
 4/25/2024 8:32:18 AM
 PWLoder-zjk



NOT TO SCALE
 STA. 4+20 TO STA. 4+95
 STA. 100+10 TO STA. 101+00
 STA. 109+00 TO STA. 109+37
 STA. 110+37 TO STA. 111+10
 STA. 164+20 TO STA. 164+93
 STA. 165+45 TO STA. 166+25
 STA. 384+00 TO STA. 384+77
 STA. 385+37 TO STA. 386+99
 STA. 388+26 TO STA. 396+48



NOT TO SCALE
 STA. 4+95 TO STA. 27+44
 STA. 101+00 TO STA. 109+00
 STA. 110+00 TO STA. 164+20
 STA. 166+25 TO STA. 384+00

- NOTES:**
1. THE COLD RECYCLED MAT SHALL BE FOG SEALED AT THE END OF EACH DAY'S PRODUCTION. PAYMENT FOR FOG SEAL SHALL BE PAID UNDER ITEM 416.30000018.
 2. ITEM 203.24010017 SHOULDER BACKUP MATERIAL WHERE SPECIFIED IN THE CONTRACT PLANS, SHALL BE LIMITED TO TYPE B (SUBBASE COURSE, TYPE 2) OR TYPE D RECYCLED ASPHALT CONCRETE.
 3. ITEM 418.7603 SHALL BE USED ON VERTICAL FACES FOR ALL JOINTS ON THE SURFACE COURSE (LONGITUDINAL, TRANSVERSE, GUTTERS, OR OTHER JOINTS BUTTING AGAINST NEW PAVEMENT). TO BE COMPLETED AS PER SPECIAL SPECIFICATION INCLUDED IN PROPOSAL.
 4. ITEM 407.102 DILUTED TACK COAT ITEM SHALL BE PROVIDED BETWEEN COLD IN PLACE RECYCLE AND TOP COURSE.
 5. CONTRACT TO INCLUDE 1000 TONS OF ITEM 623.03 CRUSHED GRAVEL BY WEIGHT TO BE USED ABOVE TO COMPLETE 5" TYPE 2 RECYCLE THE FULL 26' PROPOSED PAVEMENT WIDTH.

7	REV	DESCRIPTION	DATE	BY
6				
5				
4				
3				
2				
1				

COPYRIGHT © 2020
 FISHER ASSOCIATES
 P.E., L.S., L.A., D.P.C.

NEW YORK STATE EDUCATION LAW SECTION 1103(1)(b) FOR ANY PERSON, OTHER THAN AN EMPLOYEE OF THE STATE, WHO PREPARES, REVISES, OR ISSUES ANY DRAWING OR SPECIFICATION FOR THE DESIGN OR CONSTRUCTION OF ANY PUBLIC WORKS PROJECT, WITHOUT BEING A LICENSED PROFESSIONAL ENGINEER OR LAND SURVEYOR, TO OBTAIN OR ATTEMPT TO OBTAIN SUCH BUSINESS OR PROFESSIONAL OPPORTUNITY, OR TO OBTAIN OR ATTEMPT TO OBTAIN SUCH BUSINESS OR PROFESSIONAL OPPORTUNITY, IS GUILTY OF A VIOLATION OF SECTION 1103(1)(b) OF THE EDUCATION LAW, AND IS SUBJECT TO THE PENALTIES PROVIDED IN SECTION 1103(1)(b) OF THE EDUCATION LAW.

EA PROJECT NO. 210945
 PROJECT MANAGER P. WLODARCZYK
 DRAWN BY
 SCALE AS SHOWN
 ISSUE DATE MAR. 2024

STATE OF NEW YORK
 OFFICE OF PROFESSIONAL ENGINEERS AND SURVEYORS
 08281A

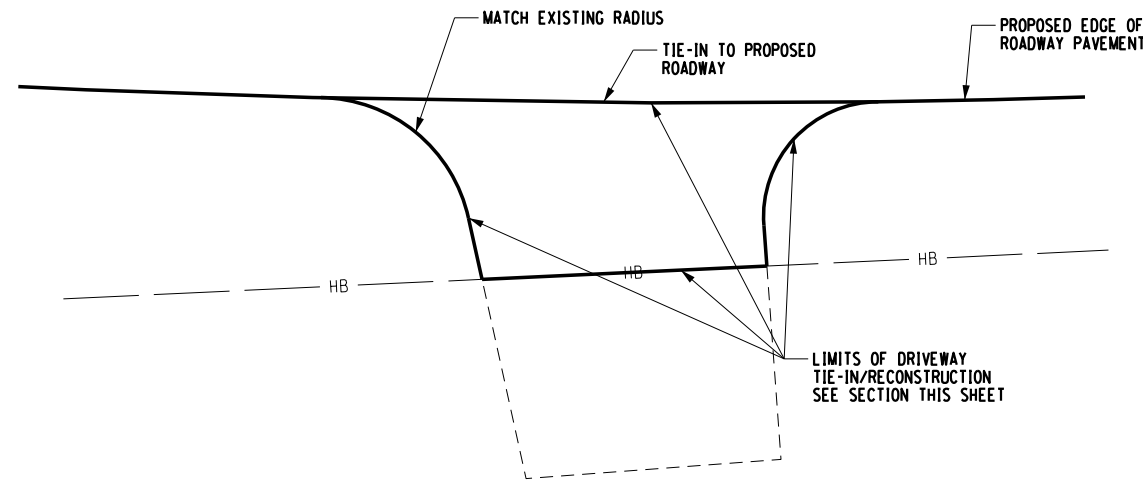
FISHER ASSOCIATES
 WWW.FISHERASSOC.COM

PROJECT CR19 PAVEMENT REHABILITATION SUBSURFACE INVESTIGATION PROGRAM TOWNS OF HUMPHREY, HINSDALE, ISCHUA, & FRANKLINVILLE CATTARAUGUS COUNTY, NEW YORK

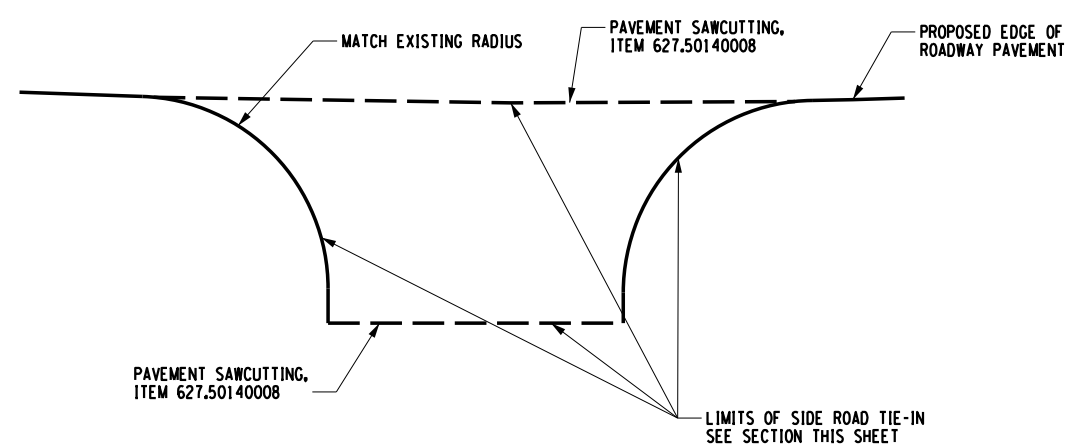
TITLE OF DRAWING TYPICAL SECTIONS

DRAWING NO. TS-01

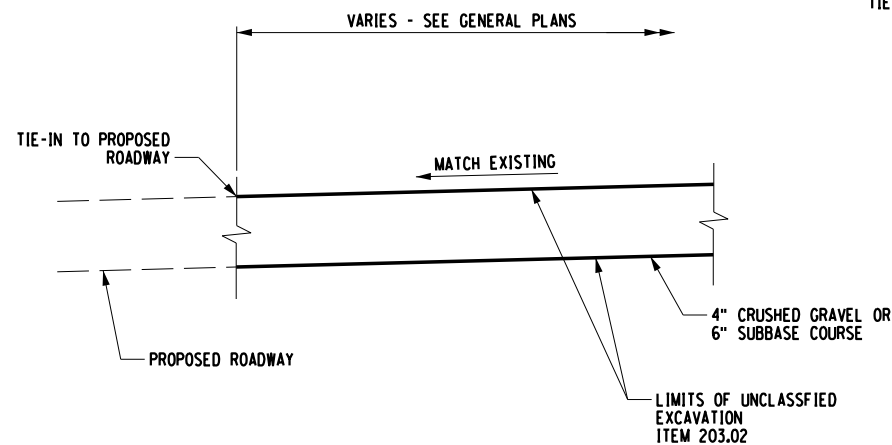
SHEET 4 OF 71



DRIVEWAY TIE-IN DETAIL
NOT TO SCALE



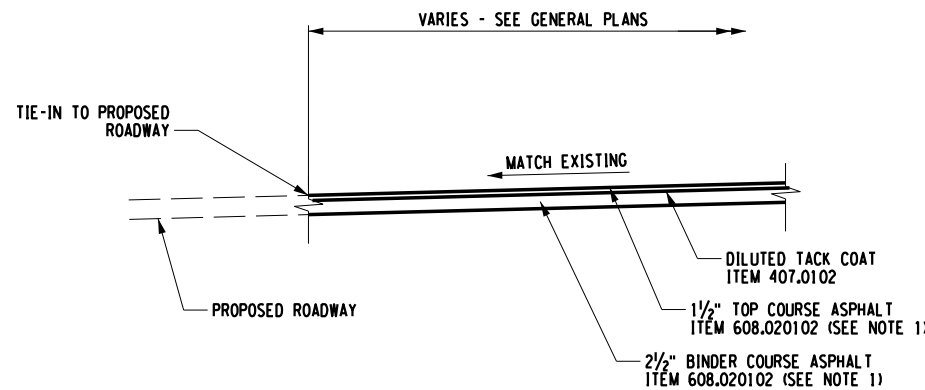
SIDE ROAD TIE-IN DETAIL
NOT TO SCALE



UNPAVED DRIVEWAY RECONSTRUCTION SECTION A-A
NOT TO SCALE

NOTES:

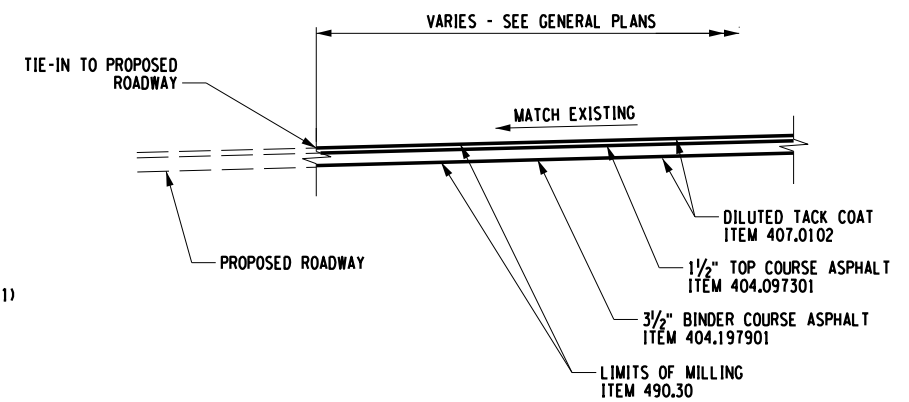
1. BOTTOM OF PROPOSED SUBBASE MATERIAL SHALL MEET BOTTOM OF EXISTING SUBBASE MATERIAL OR BE LOWER.



PAVED DRIVEWAY TIE-IN SECTION A-A
NOT TO SCALE

NOTES:

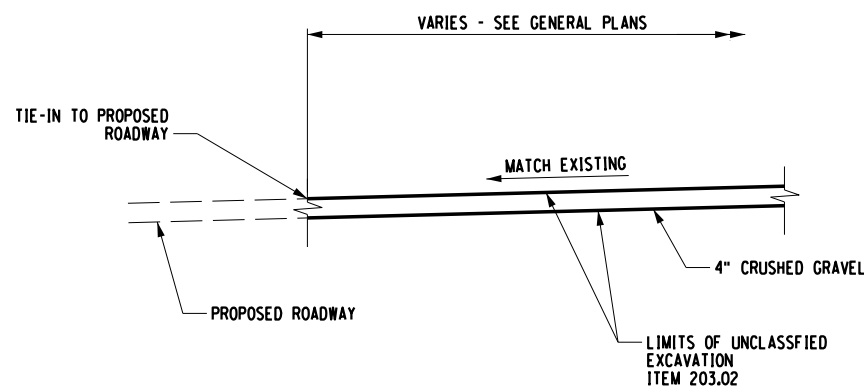
1. ITEM 608.020102 SHALL BE APPLIED IN ACCORDANCE W/ NYS DOT SPECIFICATIONS. ASPHALT BINDER COURSE SHALL BE 19MM. ASPHALT TOP COURSE SHALL BE 9.5MM.
2. STRAIGHT TACK COAT (ITEM 407.0103) SHALL BE PROVIDED BETWEEN EACH PAVEMENT LIFT IN ACCORDANCE WITH THE SPECIFICATIONS.



SIDE ROAD TIE-IN SECTION A-A
NOT TO SCALE

NOTES:

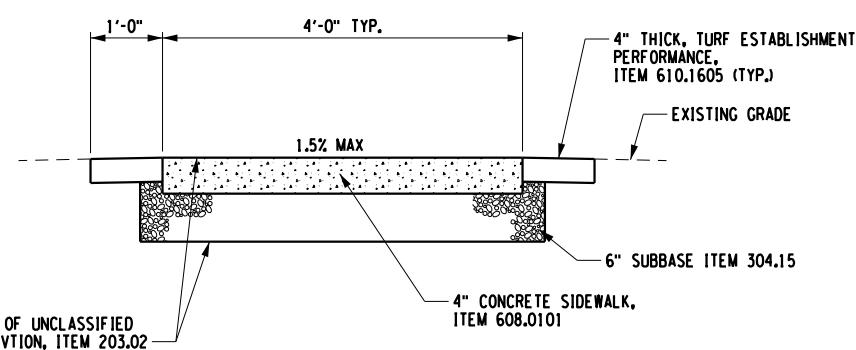
1. BOTTOM OF PROPOSED SUBBASE MATERIAL SHALL MEET BOTTOM OF EXISTING SUBBASE MATERIAL OR BE LOWER.



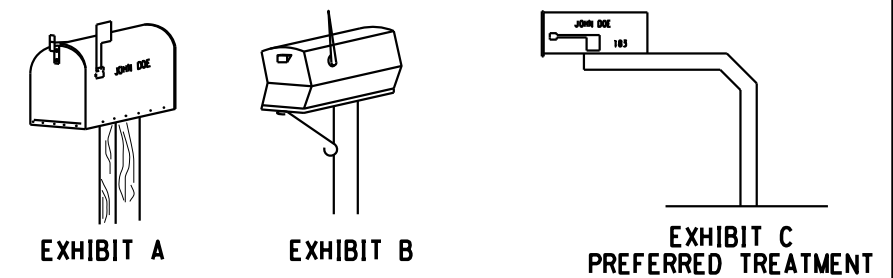
UNPAVED DRIVEWAY TIE-IN SECTION A-A
NOT TO SCALE

NOTES:

1. BOTTOM OF PROPOSED SUBBASE MATERIAL SHALL MEET BOTTOM OF EXISTING SUBBASE MATERIAL OR BE LOWER.



SIDEWALK REPLACEMENT DETAIL
NOT TO SCALE



MAILBOX DETAIL - ITEM 619.27
NOT TO SCALE

MAILBOX NOTES:

1. THERE ARE TWO APPROVED STYLES OF BOXES: (1) TRADITIONAL DESIGN IN THREE STANDARD SIZES (SEE EXHIBIT A) AND (2) CONTEMPORARY DESIGN (SEE EXHIBIT B). IN AREAS WHERE SNOW REMOVAL IS A PROBLEM THE USE OF A SEMI-ARCH OR EXTENDED ARM TYPE OF SUPPORT IS SUGGESTED (SEE EXHIBIT C). THIS ALLOWS SNOWPLOWS TO SWEEP NEAR OR UNDER BOXES WITHOUT DAMAGE TO SUPPORTS AND PROVIDES EASY ACCESS TO THE BOXES BY CARRIER AND CUSTOMERS. MAILBOX TYPE SHALL BE AOBSE.
2. MAILBOXES REMOVED SHALL NOT BE RESET UNTIL THE MOUNTING POST MEETS AASHTO RECOMMENDATIONS FOR MAILBOX SUPPORTS BEING NOT MORE THAN 4 INCHES X 4 INCHES OR 4 INCH DIA. WOOD POST OR A STEEL OR ALUMINUM PIPE 2 INCH DIA., STANDARD STRENGTH EMBEDDED NO MORE THAN 24 INCHES INTO THE GROUND. THE MINIMUM SIZE SHOULD BE 1 INCH DIA. GALVANIZED POST.
3. ALL MAILBOXES SHALL BE SET IN ACCORDANCE WITH THE U.S. POSTAL SERVICE MOUNTING PROCEDURE OF 3'-6" TO 4'-0" ABOVE THE ROADWAY AND NOT OFFSET MORE THAN 2'-0" FROM A PAVED SURFACE. VARIATIONS TO THIS APPLY WHEN IN A CURBED SECTION AS APPROVED BY THE LOCAL POSTAL AUTHORITY.

H:\Projects\21\210945-01-CR19_Pre_Design\Eng\CAD\CUT\210945_cph_mdd_MD01.dgn
 4/24/2024 1:20:43 PM
 JMoore

REV	DESCRIPTION	DATE	BY
7			
6			
5			
4			
3			
2			
1			

COPYRIGHT © 2020
 FISHER ASSOCIATES,
 P.C., L.L.O., D.P.C.
 New York State Education Law Section
 2109.4(5) requires that the holder of
 this license for any person, unless he/she
 is a duly licensed professional engineer or land
 surveyor, to alter on them in any way,
 in whole or in part, or to use them for
 any other purpose than that intended,
 without the written consent of the
 holder of the license, is a violation of
 the provisions of the law governing the
 profession, and a specific description
 of the violation.

PROJECT NO. 210945
 PROJECT MANAGER P. WLODARCZYK
 DRAWN BY AS SHOWN
 SCALE AS SHOWN
 ISSUE DATE MAR. 2024

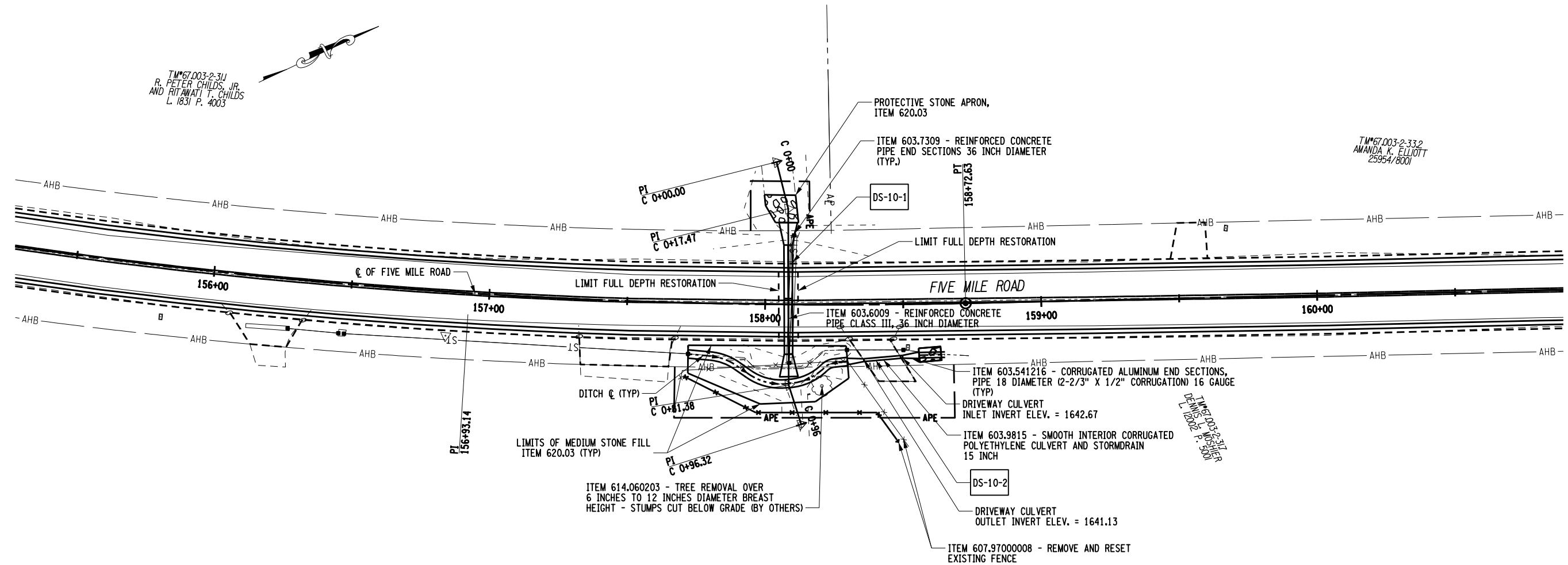


PROJECT CR19 PAVEMENT REHABILITATION
 SUBSURFACE INVESTIGATION PROGRAM
 TOWNS OF HUMPHREY, HINSDALE, ISCHUA, & FRANKLINVILLE
 CATTARAUGUS COUNTY, NEW YORK
 TITLE OF DRAWING MISCELLANEOUS DETAILS

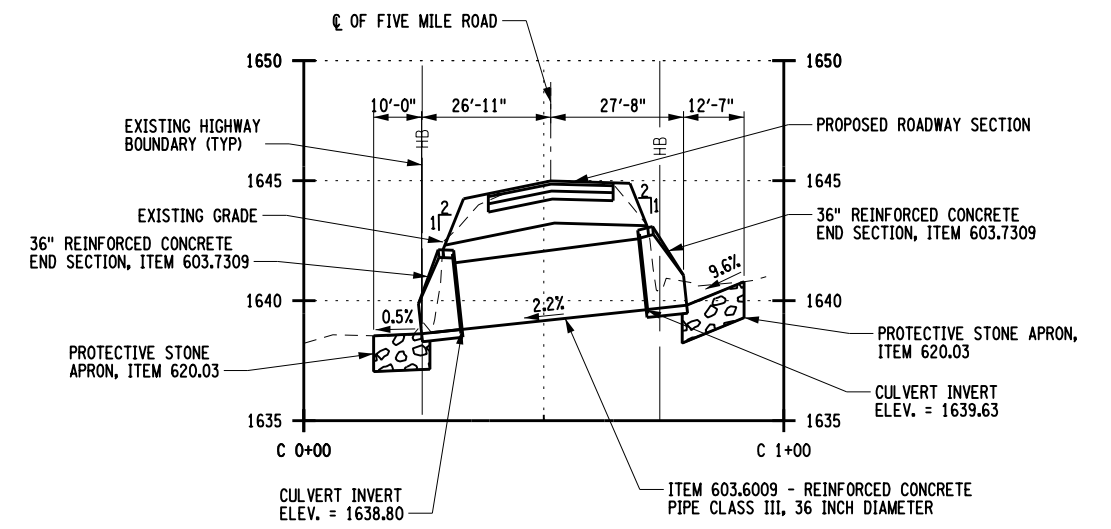
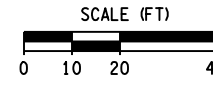
DRAWING NO. MD-01
 SHEET 11 OF 71

TM*67,003-2-311
 R. PETER CHILDS, JR.
 AND RITAWATI T. CHILDS
 L. 1831 P. 4003

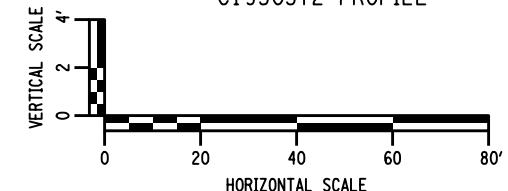
TM*67,003-2-332
 AMANDA K. ELLIOTT
 25954/8001



C1950372 PLAN



C1950372 PROFILE



REV	DESCRIPTION	DATE	BY
1			
2			
3			
4			
5			
6			
7			

EA PROJECT NO.
210945
 PROJECT MANAGER
P. WLODARCZYK
 DRAWN BY
J. MOOSE
 SCALE
AS SHOWN
 ISSUE DATE
01/26/24



PROJECT
 CR19 PAVEMENT REHABILITATION
 SUBSURFACE INVESTIGATION PROGRAM
 TOWNS OF HUMPHREY, HINSDALE, ISCHUA, & FRANKLINVILLE
 CATTARAUGUS COUNTY, NEW YORK

TITLE OF DRAWING
 C1950372 PLAN AND PROFILE

DRAWING NO.
CUL-03

NOTES:
 1. TEMPORARY WATERWAY DIVERSION STRUCTURE, ITEM 553.030002, TO BE DESIGNED AND INSTALLED BY CONTRACTOR FOLLOWING APPROVAL BY ENGINEER.

H:\Projects\21\210945-01-CR19_Pave_Design\Eng\CAD\CUT\Captal_Proj\210945_oph_gnp_Prof11e C.dgn
 4/24/2024 1:43:19 PM JMOOSE

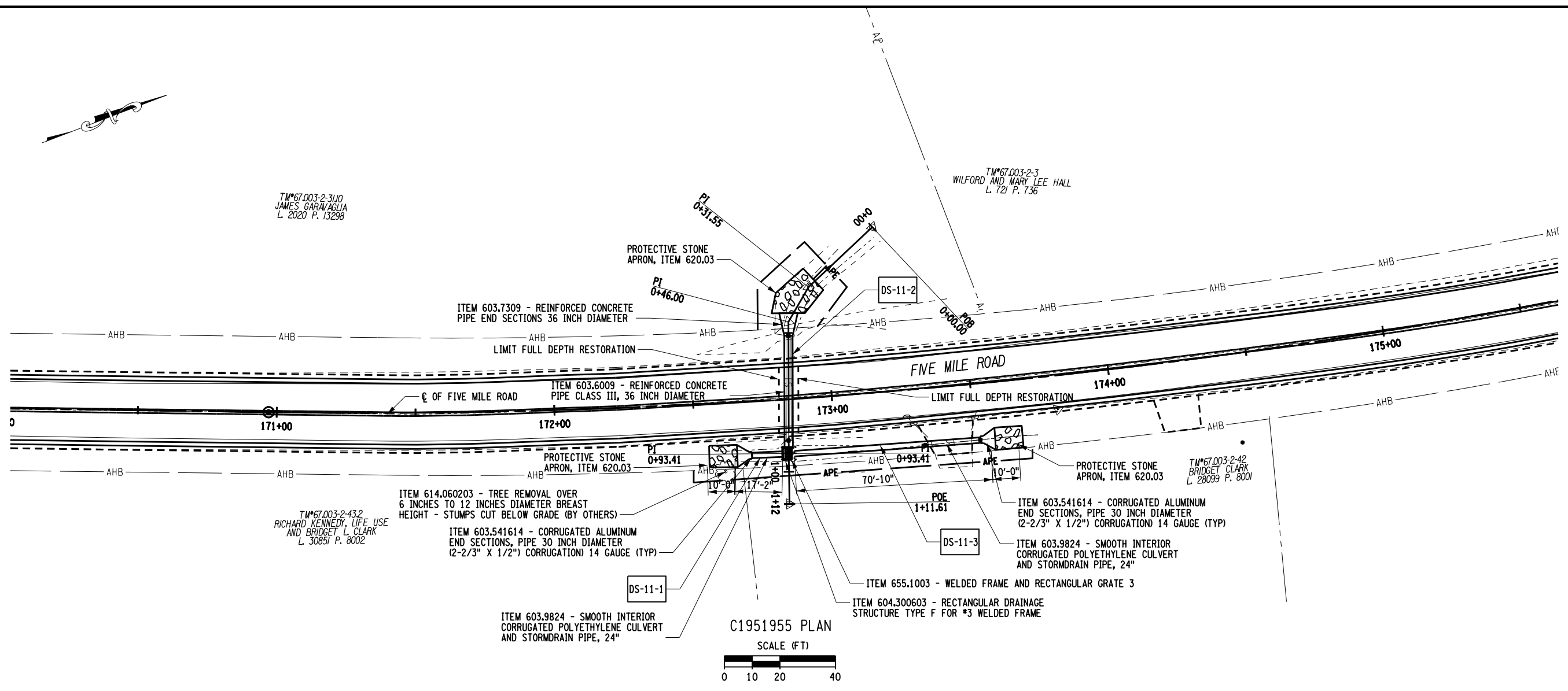


TM#67.003-2-3110
JAMES GARAVAGLIA
L. 2020 P. 13298

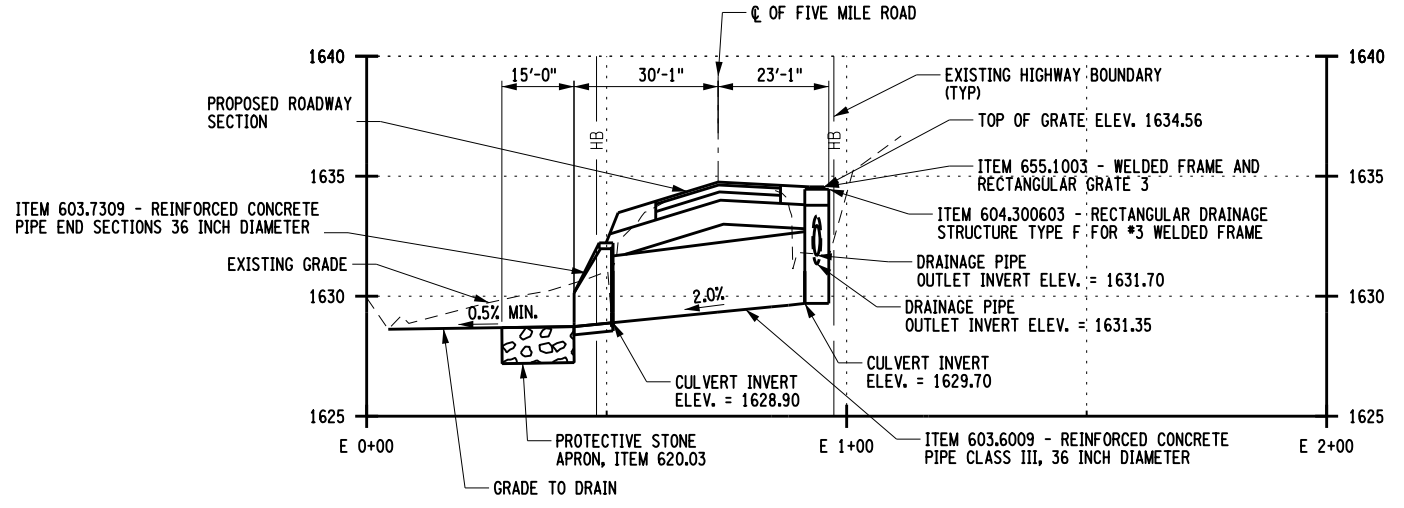
TM#67.003-2-3
WILFORD AND MARY LEE HALL
L. 721 P. 736

TM#67.003-2-432
RICHARD KENNEDY, LIFE USE
AND BRIDGET L. CLARK
L. 30851 P. 8002

TM#67.003-2-42
BRIDGET CLARK
L. 28099 P. 8001



C1951955 PLAN
SCALE (FT)
0 10 20 40



C1951955 PROFILE
VERTICAL SCALE
0 2 4'
HORIZONTAL SCALE
0 20 40 60 80'

H:\Projects\21\210945-01-CR19_Pave_Design\Eng\CAD\CUT\Captal_Proj\210945_oph_gnp_Prof1.e_dgn
4/24/2024 1:49:28 PM J.Moose

REV	DESCRIPTION	DATE	BY
7			
6			
5			
4			
3			
2			
1			

COPYRIGHT © 2020
FISHER ASSOCIATES,
P.C., L.S., L.A., D.P.C.
New York State Education Law Section
1605 requires that all drawings prepared
by a professional engineer or land
surveyor, to alter or amend in any way,
the drawing, or to be used in any way,
for a purpose other than that intended,
the drawing, or to be used in any way,
for a purpose other than that intended,
shall be signed, sealed, dated and
certified by the professional engineer,
surveyor, and a specific description
of the correction.

EA PROJECT NO.
210945
PROJECT MANAGER
P. WLODARCZYK
DRAWN BY
J. MOOSE
SCALE
AS SHOWN
ISSUE DATE
01/26/24

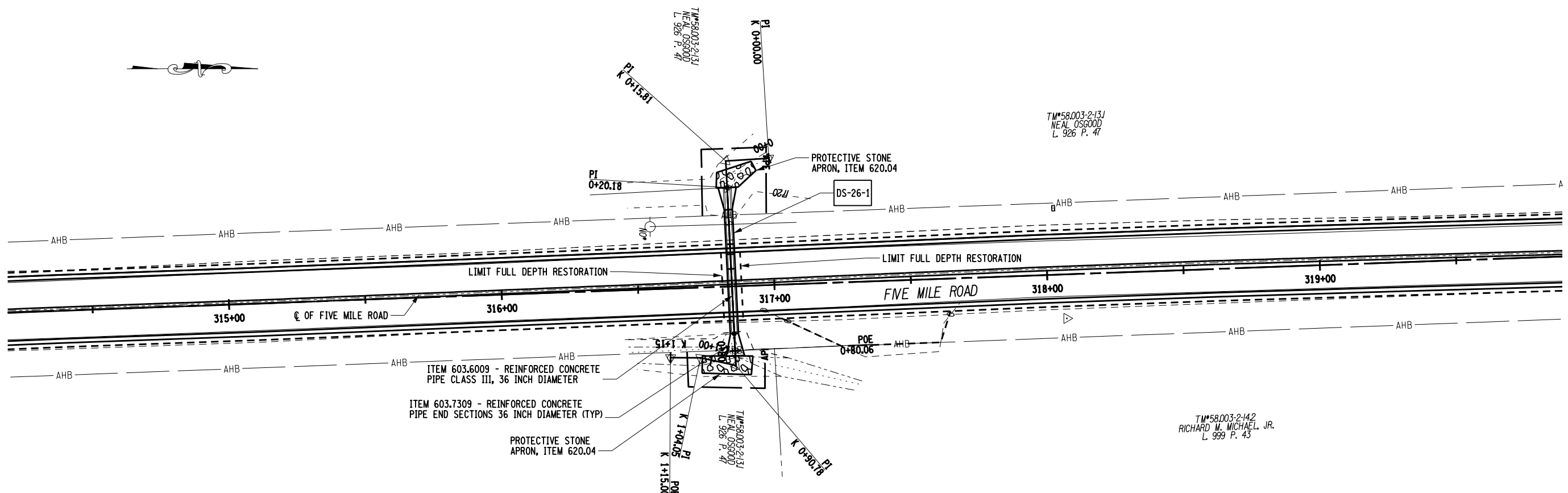


PROJECT
CR19 PAVEMENT REHABILITATION
SUBSURFACE INVESTIGATION PROGRAM
TOWNS OF HUMPHREY, HINSDALE, ISCHUA, & FRANKLINVILLE
CATTARAUGUS COUNTY, NEW YORK
TITLE OF DRAWING
C1951955 PLAN AND PROFILE

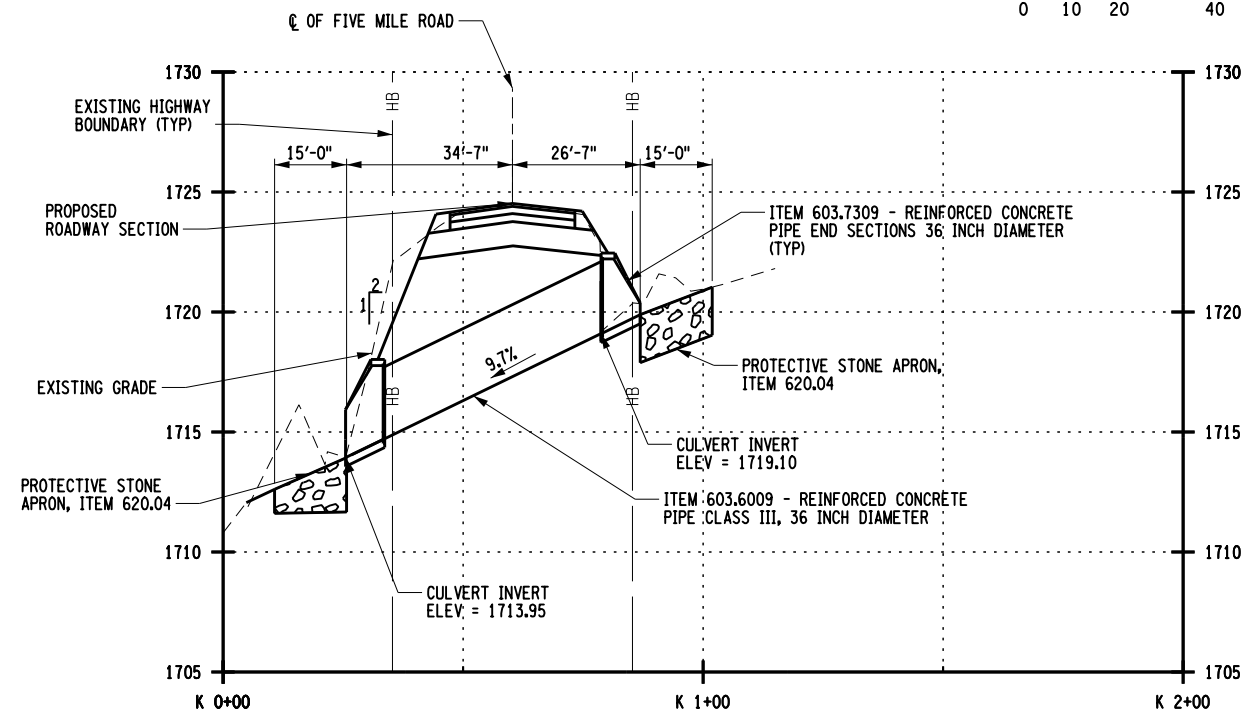
DRAWING NO.
CUL-05
SHEET 49 OF 71

NOTES:
1. TEMPORARY WATERWAY DIVERSION STRUCTURE, ITEM 553.030003,
TO BE DESIGNED AND INSTALLED BY CONTRACTOR FOLLOWING
APPROVAL BY ENGINEER.

H:\Projects\21\210945-01-CR19_Pave_Design\Eng\CAD\CUT\Captal_Project\210945_oph_gnp_Prof11e_K.dgn
 4/24/2024 1:49:21 PM
 JMoore



C1966317 PLAN
 SCALE (FT)
 0 10 20 40

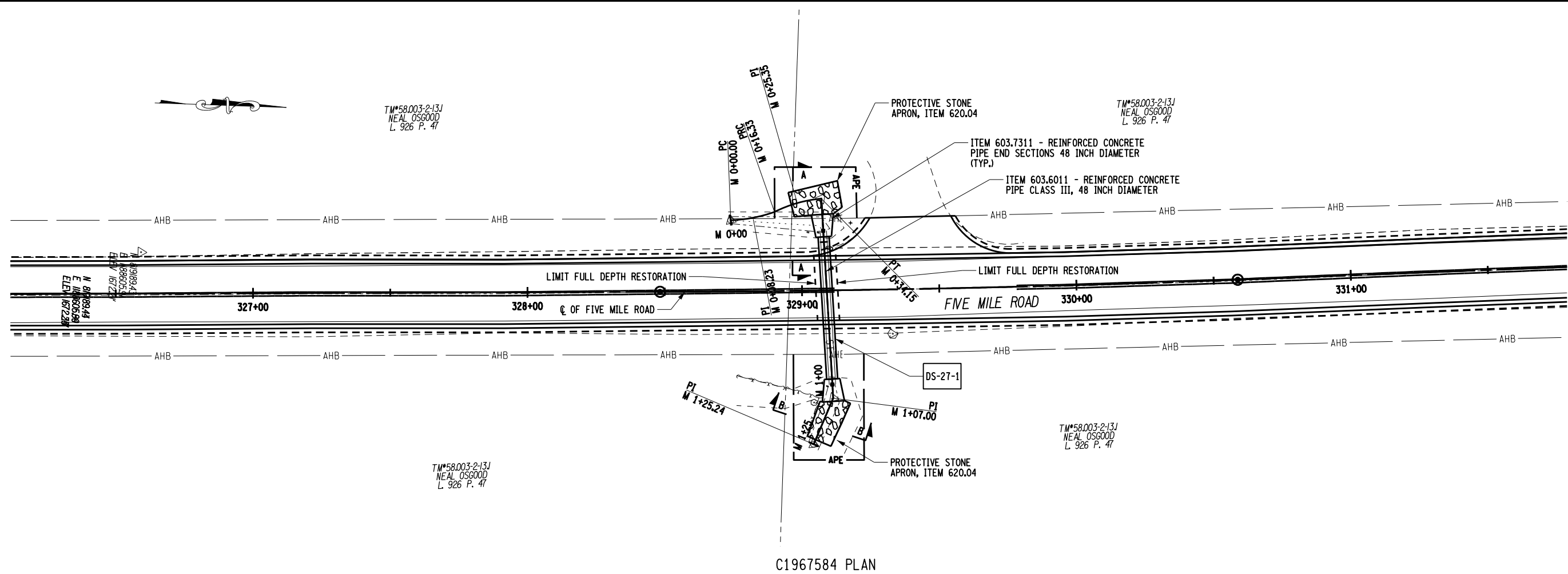


C1966317 PROFILE
 VERTICAL SCALE 0 2 4'
 HORIZONTAL SCALE 0 20 40 60 80'

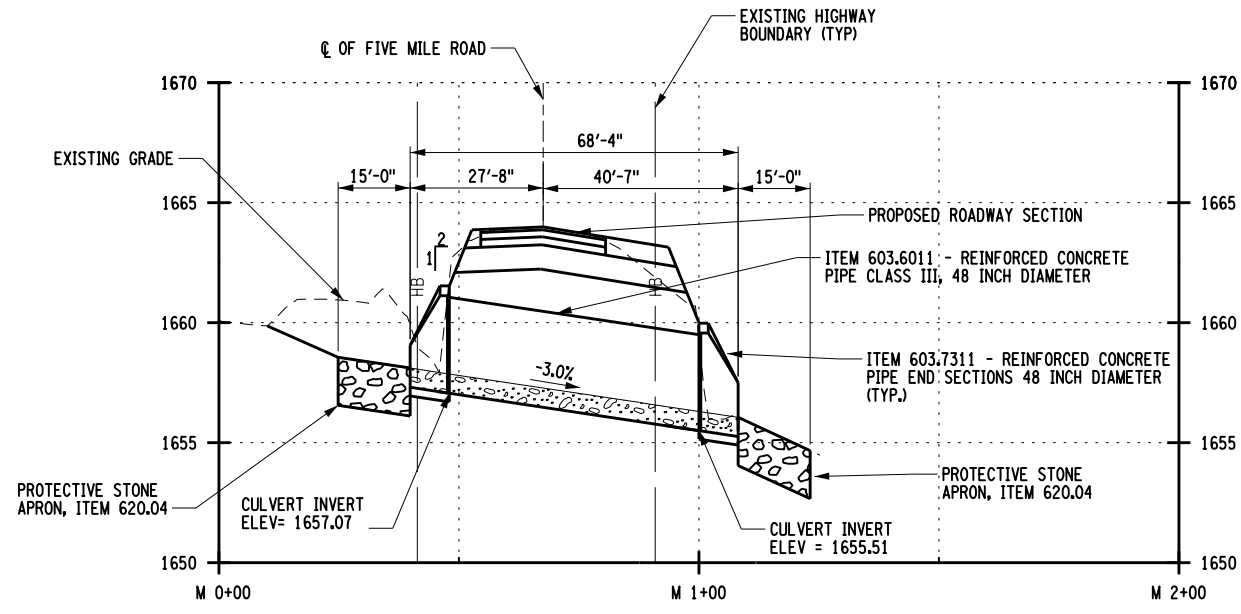
NOTES:
 1. TEMPORARY WATERWAY DIVERSION STRUCTURE, ITEM 553.030011, TO BE DESIGNED AND INSTALLED BY CONTRACTOR FOLLOWING APPROVAL BY ENGINEER.

PROJECT CR19 PAVEMENT REHABILITATION SUBSURFACE INVESTIGATION PROGRAM TOWNS OF HUMPHREY, HINSDALE, ISCHUA, & FRANKLINVILLE CATTARAUGUS COUNTY, NEW YORK		TITLE OF DRAWING C1966317 PLAN AND PROFILE	
PROJECT NO. 210945		PROJECT MANAGER P. WLODARCZYK	
DRAWN BY AS SHOWN		ISSUE DATE MAR. 2024	
SCALE AS SHOWN		DRAWING NO. CUL-13	
FISHER ASSOCIATES WWW.FISHERASSOC.COM		DRAWING NO. CUL-13	
SHEET 57 OF 71		DATE REV	

H:\Projects\210945-01-CR19_Pave_Design\Eng\CAD\CUT\Captal_Project\210945_oph_gnp_Profile_M.dgn
 4/24/2024 1:49:22 PM
 J.Moose



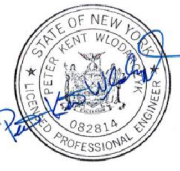
C1967584 PLAN
 SCALE (FT)
 0 10 20 40

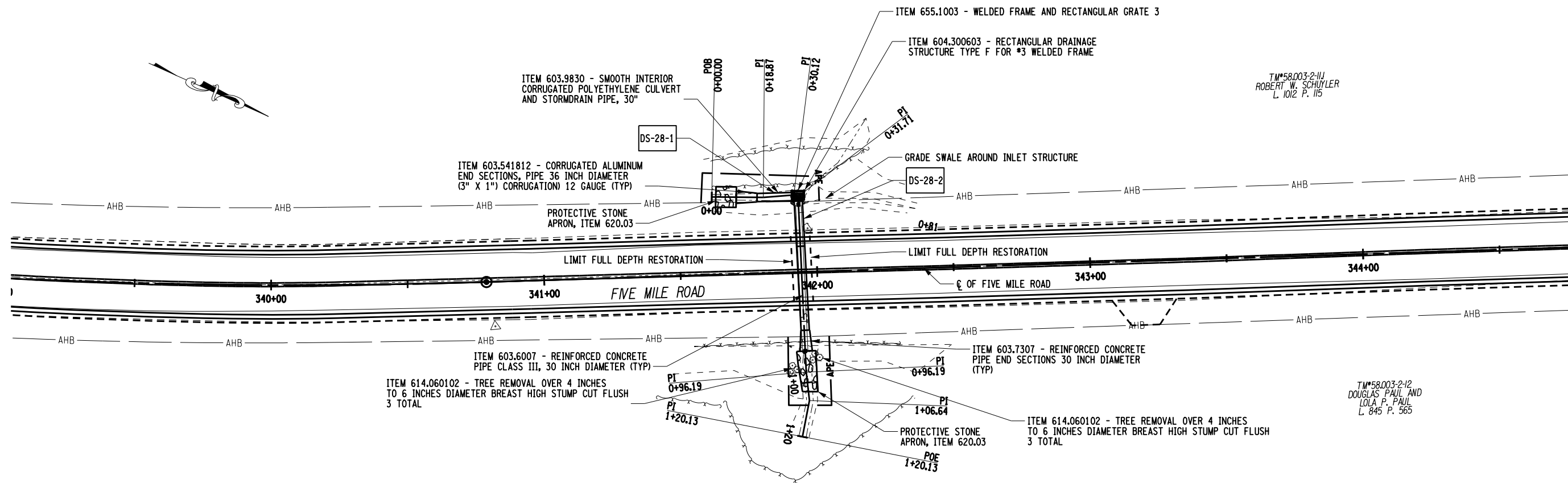


C1967584 PROFILE
 VERTICAL SCALE
 0 2 4
 HORIZONTAL SCALE
 0 20 40 60 80'

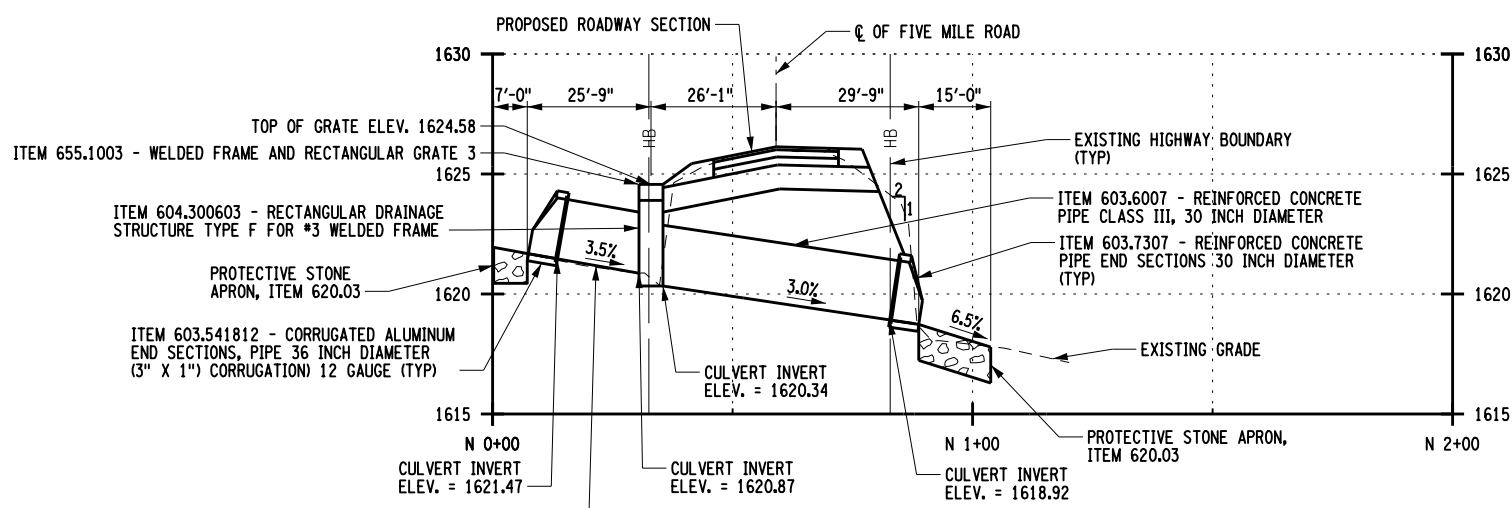
NOTES:
 1. TEMPORARY WATERWAY DIVERSION STRUCTURE, ITEM 553.030013, TO BE DESIGNED AND INSTALLED BY CONTRACTOR FOLLOWING APPROVAL BY ENGINEER.

PROJECT CR19 PAVEMENT REHABILITATION SUBSURFACE INVESTIGATION PROGRAM TOWNS OF HUMPHREY, HINSDALE, ISCHUA, & FRANKLINVILLE CATTARAUGUS COUNTY, NEW YORK		DRAWING NO. CUL-15	
TITLE OF DRAWING C1967584 PLAN AND PROFILE		SHEET 59 OF 71	
PROJECT NO. 210945	PROJECT MANAGER P. WLODARCZYK	DRAWN BY J. MOOSE	SCALE AS SHOWN
ISSUE DATE 01/26/24		DESCRIPTION REV 1 REV 2 REV 3 REV 4 REV 5 REV 6 REV 7	
DATE		BY	
COPYRIGHT © 2020 FISHER ASSOCIATES, P.C., L.L.C., D.P.C. New York State Education Law Section 1605.1 requires that the design professional seal and signature be placed on the drawing by the design professional or a duly authorized representative of the design professional. The seal and signature of the design professional are required for the drawing to be used for construction.			





C1968851 PLAN
SCALE (FT)
0 10 20 40



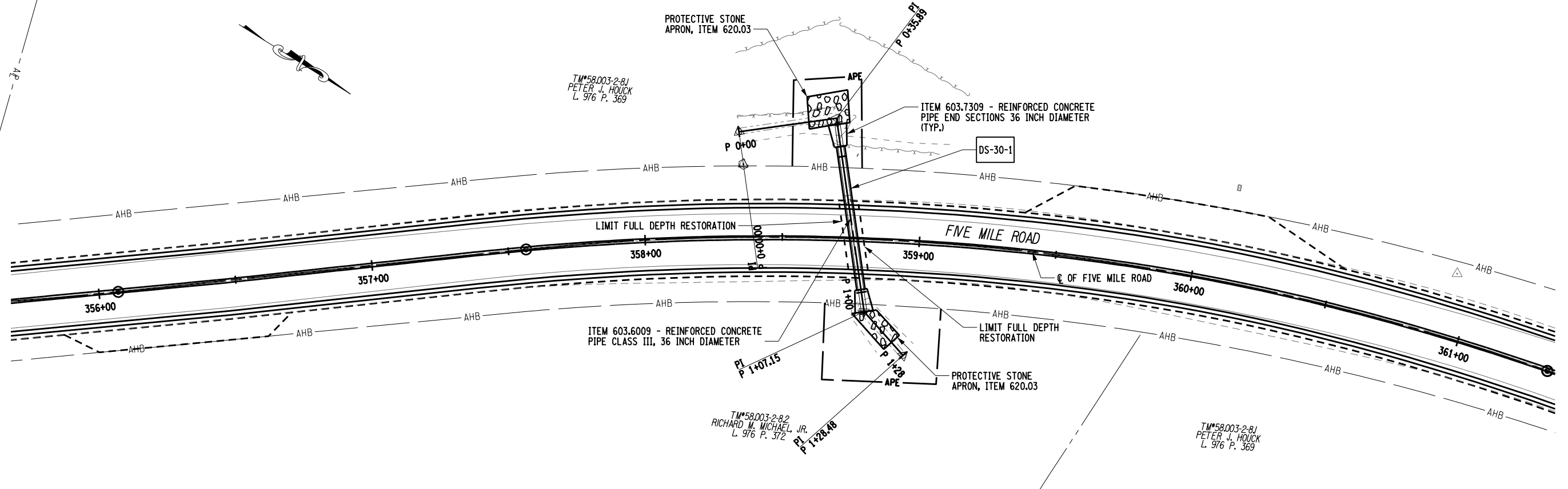
C1968851 PROFILE
VERTICAL SCALE
0 2 4
HORIZONTAL SCALE
0 20 40 60 80'

NOTES:
1. TEMPORARY WATERWAY DIVERSION STRUCTURE, ITEM 553.030014, TO BE DESIGNED AND INSTALLED BY CONTRACTOR FOLLOWING APPROVAL BY ENGINEER.

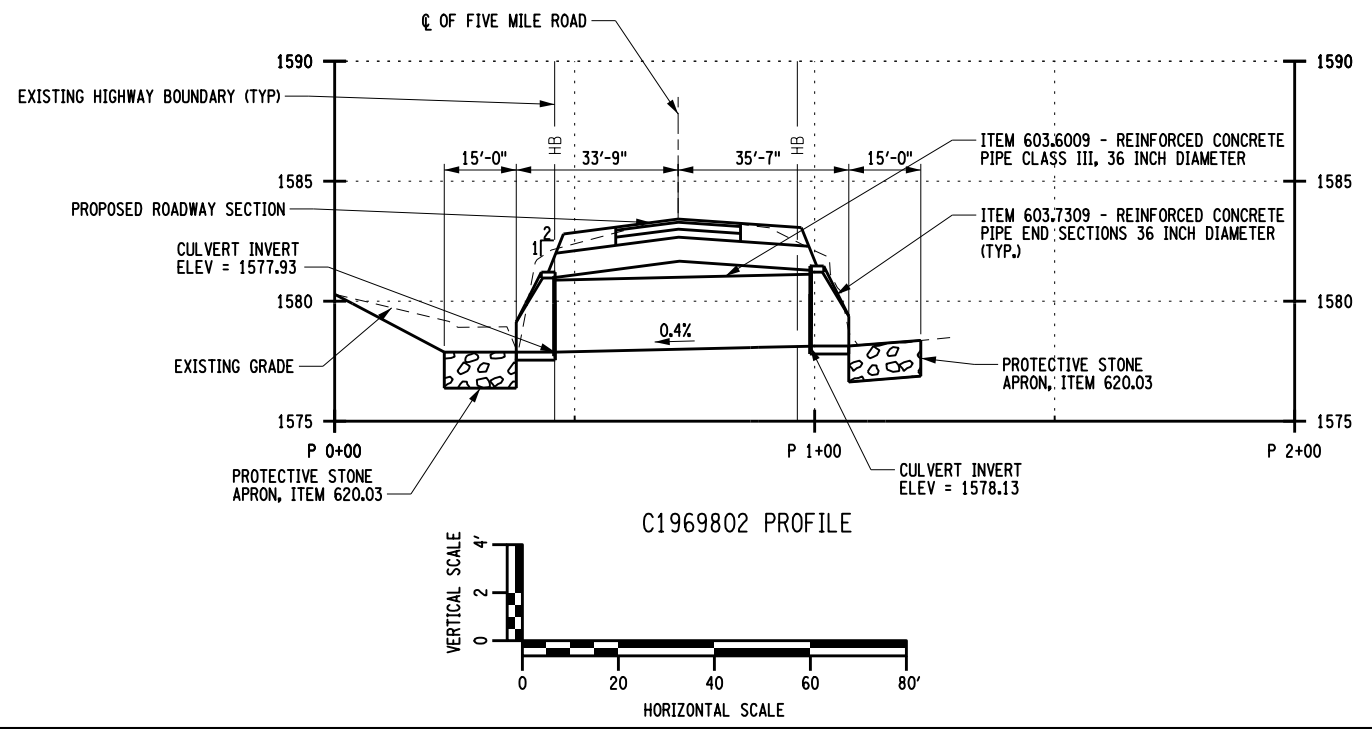
PROJECT NO. 210945 PROJECT MANAGER P. WLODARCZYK DRAWN BY J. MOOSE SCALE AS SHOWN ISSUE DATE 01/26/24		DESCRIPTION C1968851 PLAN AND PROFILE	DATE	BY
PROJECT CR19 PAVEMENT REHABILITATION SUBSURFACE INVESTIGATION PROGRAM TOWNS OF HUMPHREY, HINSDALE, ISCHUA, & FRANKLINVILLE CATTARAUGUS COUNTY, NEW YORK TITLE OF DRAWING C1968851 PLAN AND PROFILE			DATE	BY
DRAWING NO. CUL-16				
SHEET 60 OF 71				

H:\Projects\21\210945-01-CR19_Pave_Design\Eng\CAD\CUT\Captal_Proj\210945_oph_gmp_Prof11e_N.dgn
 4/24/2024 1:49:23 PM J.Moose

H:\Projects\210945-01-CR19-Pre-Design\Eng\CAD\CUT\Captal Project\210945-01-Pre-Design\Drawings\C1969802.dgn
 4/24/2024 1:43:25 PM
 J.Moose



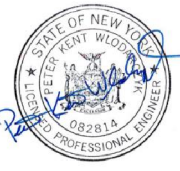
C1969802 PLAN
 SCALE (FT)
 0 10 20 40



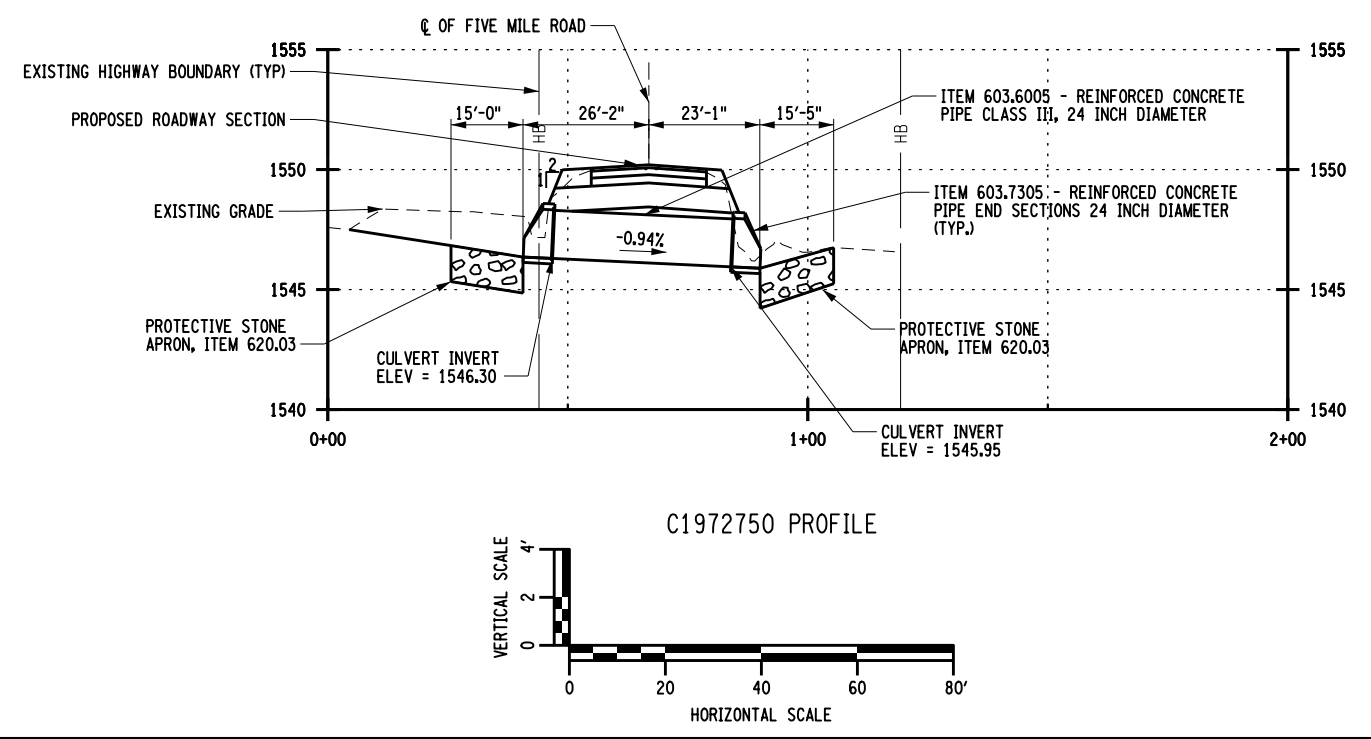
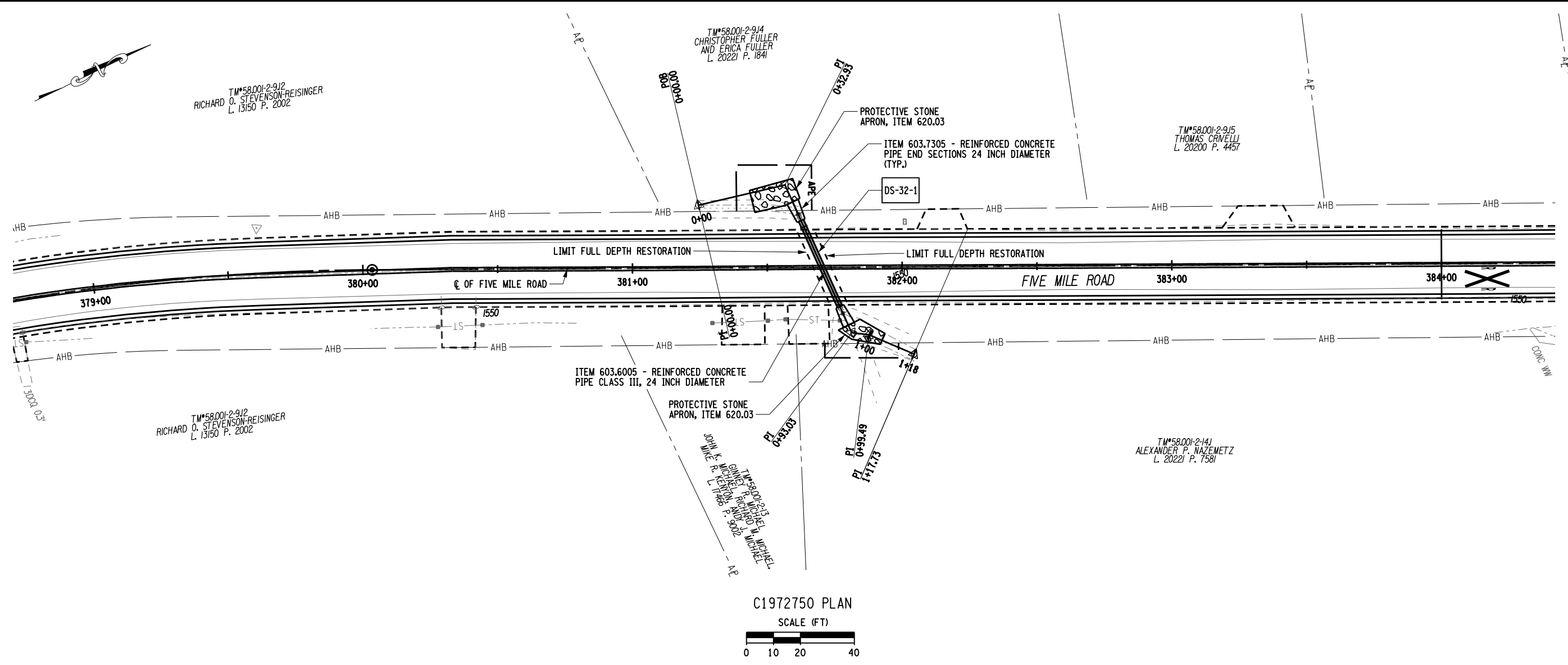
C1969802 PROFILE

NOTES:
 1. TEMPORARY WATERWAY DIVERSION STRUCTURE, ITEM 553.030016, TO BE DESIGNED AND INSTALLED BY CONTRACTOR FOLLOWING APPROVAL BY ENGINEER.

PROJECT CR19 PAVEMENT REHABILITATION SUBSURFACE INVESTIGATION PROGRAM TOWNS OF HUMPHREY, HINSDALE, ISCHUA, & FRANKLINVILLE CATTARAUGUS COUNTY, NEW YORK		TITLE OF DRAWING C1969802 PLAN AND PROFILE	
DRAWING NO. CUL-18		SHEET 62 OF 71	
PROJECT NO. 210945		PROJECT MANAGER P. WLODARCZYK	
DRAWN BY J. MOOSE		ISSUE DATE 01/26/24	
SCALE AS SHOWN		DATE 01/26/24	
COPYRIGHT © 2020 FISHER ASSOCIATES, P.C., L.L.C., D.P.C. New York State Education Law Section 1405.3 requires that this drawing be prepared by a licensed professional engineer or land surveyor, to alter in any way, or to be used for any other purpose, without the written consent of the engineer or land surveyor, is prohibited. The notation "prepared by" followed by a signature and a specific description of the profession, shall be required.			
7	6	5	4
3	2	1	REV
DESCRIPTION		DATE	BY



H:\Projects\21\210945-01-CR19-Pre-Design\Eng\CAD\CUT\Captal_Project\210945_oph_gmp_Prof1.e d.dgn
 4/24/2024 1:49:26 PM
 J.Moose



NOTES:
 1. TEMPORARY WATERWAY DIVERSION STRUCTURE, ITEM 553.030017, TO BE DESIGNED AND INSTALLED BY CONTRACTOR FOLLOWING APPROVAL BY ENGINEER.

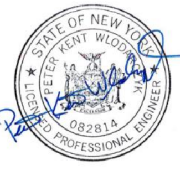
PROJECT CR19 PAVEMENT REHABILITATION SUBSURFACE INVESTIGATION PROGRAM TOWNS OF HUMPHREY, HINSDALE, ISCHUA, & FRANKLINVILLE CATTARAUGUS COUNTY, NEW YORK		TITLE OF DRAWING C1972750 PLAN AND PROFILE								
DRAWING NO. CUL-19		SHEET 63 OF 71								
PROJECT NO. 210945		PROJECT MANAGER P. WLODARCZYK								
DRAWN BY J. MOOSE		ISSUE DATE 01/26/24								
SCALE AS SHOWN		AS SHOWN								
COPYRIGHT © 2020 FISHER ASSOCIATES, P.C., L.L.C., D.P.C. New York State Education Law Section 1605(3) requires that the seal of the professional engineer or land surveyor, to alter in any way, or to be used in any way, or to be used in any way, or to be used in any way, or to be used in any way, or to be used in any way, or to be used in any way, or to be used in any way,										
7	6	5	4	3	2	1	REV	DESCRIPTION	DATE	BY



H:\Projects\21\210945-01-CR19_Pre_Design\Eng\CAD\CUT\Capt.Lal_Proj\210945_cph_eoq_01.dgn
4/24/2024 3:18:32 PM JMoose

ESTIMATE OF QUANTITIES			
ITEM NO.	DESCRIPTION	UNIT	QUANTITY
201.0600007	GRUBBING PREVIOUSLY CLEARED LAND	LS	1
203.02	UNCLASSIFIED EXCAVATION AND DISPOSAL	CY	340
203.03	EMBANKMENT IN PLACE	CY	319
203.07	SELECT GRANULAR FILL	CY	1794
203.21	SELECT STRUCTURE FILL	CY	113
203.24010017	SHOULDER BACKUP MATERIAL	TON	3099
206.01	STRUCTURE EXCAVATION	CY	602
206.0201	TRENCH AND CULVERT EXCAVATION	CY	2395
207.20	GEOTEXTILE BEDDING	SY	176
304.15	SUBBASE COURSE, OPTIONAL TYPE	CY	470
404.000011	PLANT PRODUCTION QUALITY ADJUSTMENT TO WMA ITEMS	QU	17
404.097301	9.5 F3 TOP COURSE ASPHALT, 70 SERIES COMPACTION	TON	7551
404.197901	19 F9 BINDER COURSE ASPHALT, 70 SERIES COMPACTION	TON	153
404.377901	37.5 F9 BASE COURSE WMA, 70 SERIES COMPACTION	TON	114
407.0102	DILUTED TACK COAT	GAL	9250
416.10000018	COLD RECYCLING ASPHALT CONCRETE - COARSE	SY	87372
416.21000018	POLYMER MODIFIED ASPHALT EMULSION	GAL	172800
416.30000018	FOG SEAL	GAL	8738
418.7603	ASPHALT PAVEMENT JOINT ADHESIVE	LF	31733
490.10	PRODUCTION COLD MILLING OF BITUMINOUS CONCRETE	SY	91674
490.30	MISCELLANEOUS COLD MILLING OF BITUMINOUS CONCRETE	SY	185
552.17	SHIELDS AND SHORING	SF	11419
553.030001	TEMPORARY WATERWAY DIVERSION STRUCTURE	EACH	1
553.030002	TEMPORARY WATERWAY DIVERSION STRUCTURE	EACH	1
553.030003	TEMPORARY WATERWAY DIVERSION STRUCTURE	EACH	1
553.030004	TEMPORARY WATERWAY DIVERSION STRUCTURE	EACH	1
553.030005	TEMPORARY WATERWAY DIVERSION STRUCTURE	EACH	1
553.030006	TEMPORARY WATERWAY DIVERSION STRUCTURE	EACH	1
553.030007	TEMPORARY WATERWAY DIVERSION STRUCTURE	EACH	1
553.030008	TEMPORARY WATERWAY DIVERSION STRUCTURE	EACH	1
553.030009	TEMPORARY WATERWAY DIVERSION STRUCTURE	EACH	1
553.030010	TEMPORARY WATERWAY DIVERSION STRUCTURE	EACH	1
553.030011	TEMPORARY WATERWAY DIVERSION STRUCTURE	EACH	1
553.030012	TEMPORARY WATERWAY DIVERSION STRUCTURE	EACH	1
553.030013	TEMPORARY WATERWAY DIVERSION STRUCTURE	EACH	1
553.030014	TEMPORARY WATERWAY DIVERSION STRUCTURE	EACH	1
553.030015	TEMPORARY WATERWAY DIVERSION STRUCTURE	EACH	1
553.030016	TEMPORARY WATERWAY DIVERSION STRUCTURE	EACH	1
553.030017	TEMPORARY WATERWAY DIVERSION STRUCTURE	EACH	1
555.08	FOOTING CONCRETE, CLASS HP	CY	3
555.09	CONCRETE FOR STRUCTURES, CLASS HP	CY	7
556.0202	EPOXY-COATED BAR REINFORCEMENT FOR STRUCTURES	LB	1439
580.01	REMOVAL OF STRUCTURAL CONCRETE	CY	11
586.0201	DRILLING AND GROUTING BOLTS OR REINFORCEMENT BARS	EACH	22
595.50000018	SHEET-APPLIED WATERPROOFING MEMBRANE	SF	636
603.541016	CORRUGATED ALUMINUM END SECTIONS, PIPE 12 INCHDIAMETER (2-2/3" X 1/2" CORRUGATION) 16 GA	EACH	8
603.541116	CORRUGATED ALUMINUM END SECTIONS, PIPE 15 INCHDIAMETER (2-2/3" X 1/2" CORRUGATION) 16 GAUGE	EACH	7
603.541216	CORRUGATED ALUMINUM END SECTIONS, PIPE 18 INCHDIAMETER (2-2/3" X 1/2" CORRUGATION) 16 GAUGE	EACH	36
603.541316	CORRUGATED ALUMINUM END SECTIONS, PIPE 21 INCHDIAMETER (2-2/3" X 1/2" CORRUGATION) 16 GAUGE	EACH	2
603.541414	CORRUGATED ALUMINUM END SECTIONS, PIPE 24 INCHDIAMETER (2-2/3" X 1/2" CORRUGATION) 14 GA	EACH	2
603.541614	CORRUGATED ALUMINUM END SECTIONS, PIPE 30 INCHDIAMETER (2-2/3" X 1/2" CORRUGATION) 14 GA	EACH	10
603.541812	CORRUGATED ALUMINUM END SECTIONS, PIPE 36 INCHDIAMETER (3" X 1" CORRUGATION) 12 GAUGE	EACH	9
603.541912	CORRUGATED ALUMINUM END SECTIONS, PIPE 42 INCHDIAMETER (3" X 1" CORRUGATION) 12 GAUGE	EACH	1
603.6005	REINFORCED CONCRETE PIPE CLASS III, 24 INCH DIAMETER	LF	40
603.6007	REINFORCED CONCRETE PIPE CLASS III, 30 INCH DIAMETER	LF	52
603.6009	REINFORCED CONCRETE PIPE CLASS III, 36 INCH DIAMETER	LF	198
603.6011	REINFORCED CONCRETE PIPE CLASS III, 48 INCH DIAMETER	LF	56
603.63060315	PRECAST CONCRETE BOX CULVERT, 6 FOOT SPAN, 3 FOOT RISE	LF	54
603.63070315	PRECAST CONCRETE BOX CULVERT (FILL HEIGHT LESS THAN 24 IN) 7 FOOT SPAN, 3 FOOT RISE	LF	53
603.6707	REINFORCED CONCRETE HORIZONTAL ELLIPTICAL PIPE, CLASS HE III 32" RISE, 49" SPAN	LF	58
603.67070008	REINFORCED CONCRETE HORIZONTAL ELLIPTICAL PIPE ENDSECTION, CLASS HE III 32 INCH RISE X 49 INCH SPAN	EACH	2
603.7301	REINFORCED CONCRETE PIPE END SECTIONS 12 INCHDIAMETER	EACH	2
603.7305	REINFORCED CONCRETE PIPE END SECTIONS 24 INCHDIAMETER	EACH	2
603.7307	REINFORCED CONCRETE PIPE END SECTIONS 30 INCHDIAMETER	EACH	1
603.7309	REINFORCED CONCRETE PIPE END SECTIONS 36 INCHDIAMETER	EACH	7
603.7311	REINFORCED CONCRETE PIPE END SECTIONS 48 INCHDIAMETER	EACH	2
603.9815	SMOOTH INTERIOR CORRUGATED POLYETHYLENE CULVERT AND STORMDRAIN 15 INCH DIAMETER	LF	299
603.9824	SMOOTH INTERIOR CORRUGATED POLYETHYLENE CULVERT AND STORMDRAIN 24 INCH DIAMETER	LF	410
603.9830	SMOOTH INTERIOR CORRUGATED POLYETHYLENE CULVERT AND STORMDRAIN 30 INCH DIAMETER	LF	371

ESTIMATE OF QUANTITIES			
ITEM NO.	DESCRIPTION	UNIT	QUANTITY
603.9842	SMOOTH INTERIOR POLYETHYLENE CULVERT PIPE AND STORM DRAINPIPE - 42 INCH DIAMETER	LF	45
604.300603	RECTANGULAR DRAINAGE STRUCTURE TYPE F FOR #3 WELDED FRAME	LF	49.5
604.301103	RECTANGULAR DRAINAGE STRUCTURE TYPE K FOR #3 WELDED FRAME	LF	15.4
607.97000008	REMOVE AND RESET EXISTING FENCE	LF	115
608.000013	Plant Production Quality Adjustment to Asphalt Sidewalks, Driveways, Bicycle Paths, and Vegetation Control Strips	QU	2
608.0101	CONCRETE SIDEWALKS AND DRIVEWAYS	CY	2
608.020102	HOT MIX ASPHALT (HMA) SIDEWALKS, DRIVEWAYS AND BICYCLE PATHS, AND VEGETATION CONTROL STRIPS	TON	30
610.1605	TURF ESTABLISHMENT - PERFORMANCE	SY	3423
613.04000001	STOCKPILING AND PLACING EXISTING STREAM BED MATERIALS	CY	30
619.01	BASIC WORK TRAFFIC CONTROL	LS	1
619.27	MAILBOXES	EACH	8
620.03	STONE FILLING (LIGHT)	CY	231
620.04	STONE FILLING (MEDIUM)	CY	110
620.0802	BEDDING MATERIAL, TYPE 2	CY	160
621.01	CLEANING CULVERTS WITH SPAN OF 50 IN. OR LESS	LF	1040
621.51000015	GRADING CLEANING AND RESHAPING EXISTING DITCHES	LF	358
623.03	CRUSHED STONE (BY WEIGHT)	TON	1000
623.11	CRUSHED GRAVEL (IN-PLACE MEASURE)	CY	64
625.01	SURVEY OPERATIONS	LS	1
627.50140008	CUTTING PAVEMENT	LF	399
637.11	ENGINEER'S FIELD OFFICE - TYPE 1	MNTH	12
637.34	OFFICE TECHNOLOGY AND SUPPLIES	DC	2500
640.20	WHITE PAINT REFLECTORIZED PAVEMENT STRIPES - 20 MILS	LF	63466
640.21	YELLOW PAINT REFLECTORIZED PAVEMENT STRIPES - 20 MILS	LF	63466
655.1003	WELDED FRAME AND RECTANGULAR GRATE 3	EACH	11
698.04	ASPHALT PRICE ADJUSTMENT	DC	11662
698.05	FUEL PRICE ADJUSTMENT	DC	1818
699.040001	MOBILIZATION	LS	1

7	6	5	4	3	2	1	REV	DATE	BY
COPYRIGHT © 2020 FISHER ASSOCIATES, P.C., L.A., D.P.C. New York State Education Law Section 801.2(3) requires that the title of the drawing be the name of the project and the location, entered by the drafter or drafter's engineer or land surveyor and approved by the drafter's engineer or land surveyor, and a specific description of the work.									
PROJECT NO. 210945 PROJECT MANAGER P. WLODARCZYK DRAWN BY J. MOOSE SCALE AS SHOWN ISSUE DATE 01/26/24									
									
									
PROJECT CR19 PAVEMENT REHABILITATION SUBSURFACE INVESTIGATION PROGRAM TOWNS OF HUMPHREY, HINSDALE, ISCHUA, & FRANKLINVILLE CATTARAUGUS COUNTY, NEW YORK TITLE OF DRAWING ESTIMATE OF QUANTITIES									
DRAWING NO. EOQ-01									
SHEET 71 OF 71									