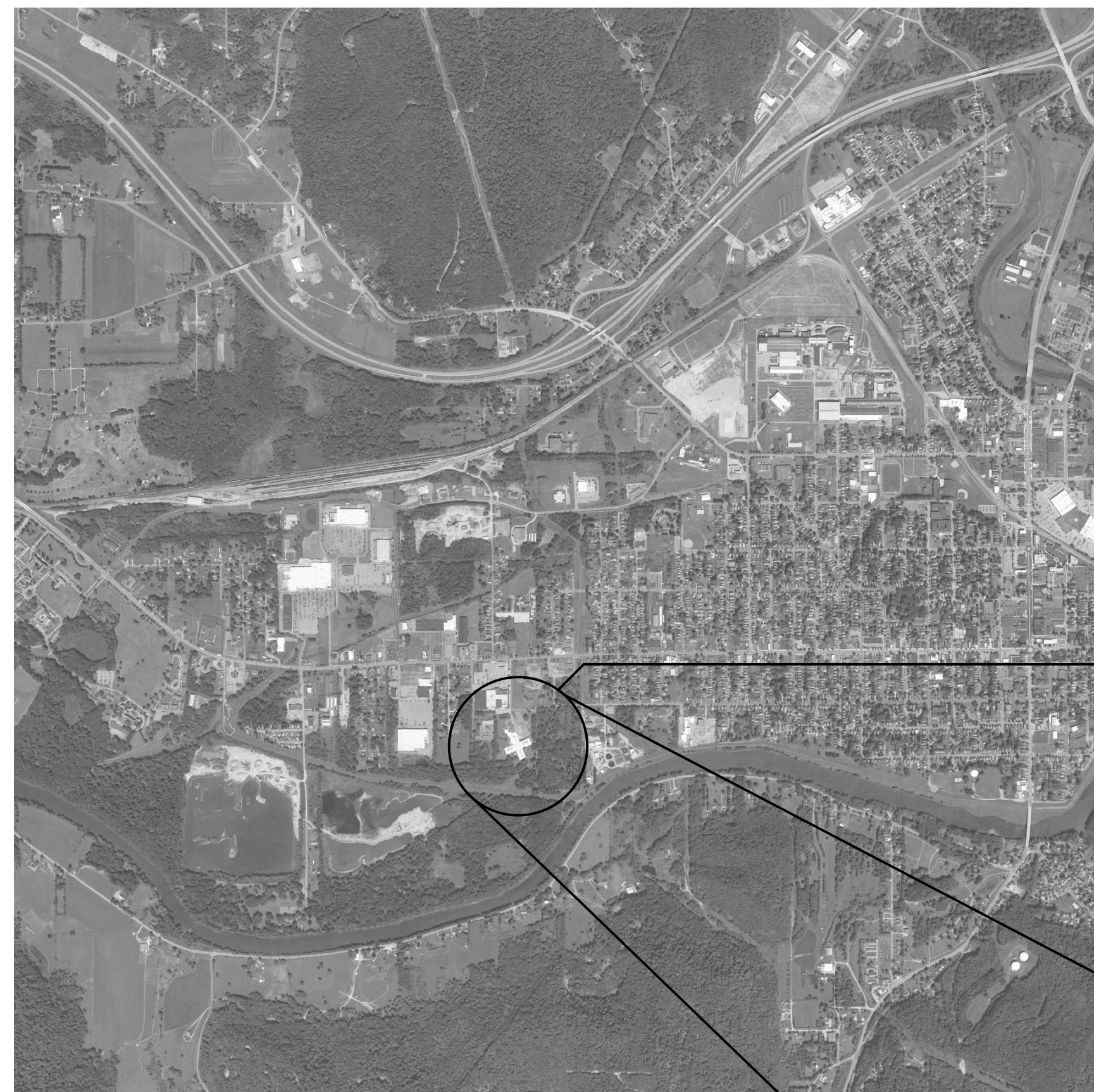


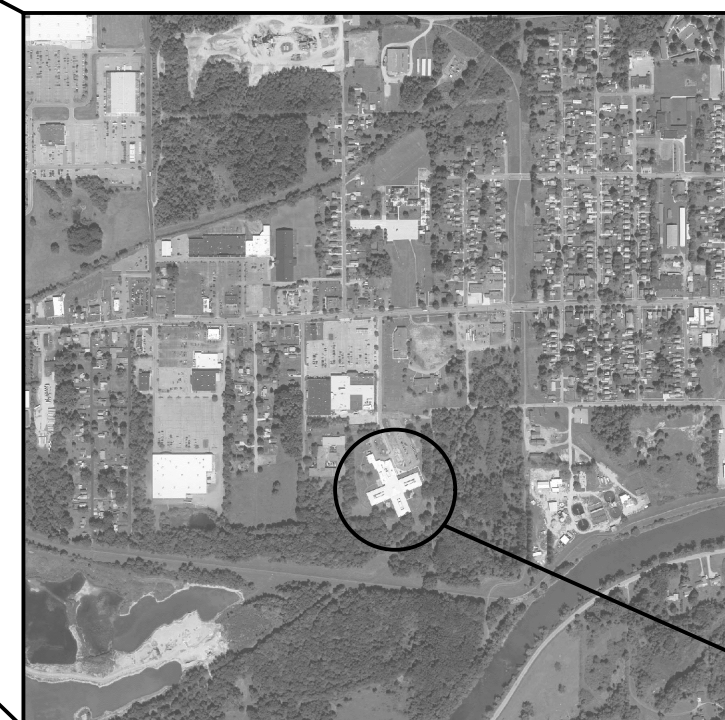
THE PINES HEALTHCARE & REHABILITATION CENTER, OLEAN CAMPUS

2254 WEST STATE STREET,
OLEAN, NY 14760

CATT COUNTY PINES WATER HEATER REPLACEMENT



SITE



BID DOCUMENTS
MARCH 23, 2020



Centerpointe Corporate Park
375 Essjay Road, Suite 200
Williamsville, NY 14221
www.wendelcompanies.com
p:716.688.0766 f:716.625.6825

Wendel Project No. 307657



PROJECT LOCATION

DRAWING INDEX

- G000 COVERSHEET
- HAZARDOUS MATERIALS
- HM100 ASBESTOS ABATEMENT PARTIAL FLOOR PLAN
- PLUMBING
- P001 SYMBOLS, ABBREVIATIONS AND GENERAL NOTES
- PD101 PARTIAL FIRST FLOOR DEMOLITION PLAN
- P101 PARTIAL FIRST FLOOR PLAN
- P201 PLUMBING DETAILS AND SCHEDULES

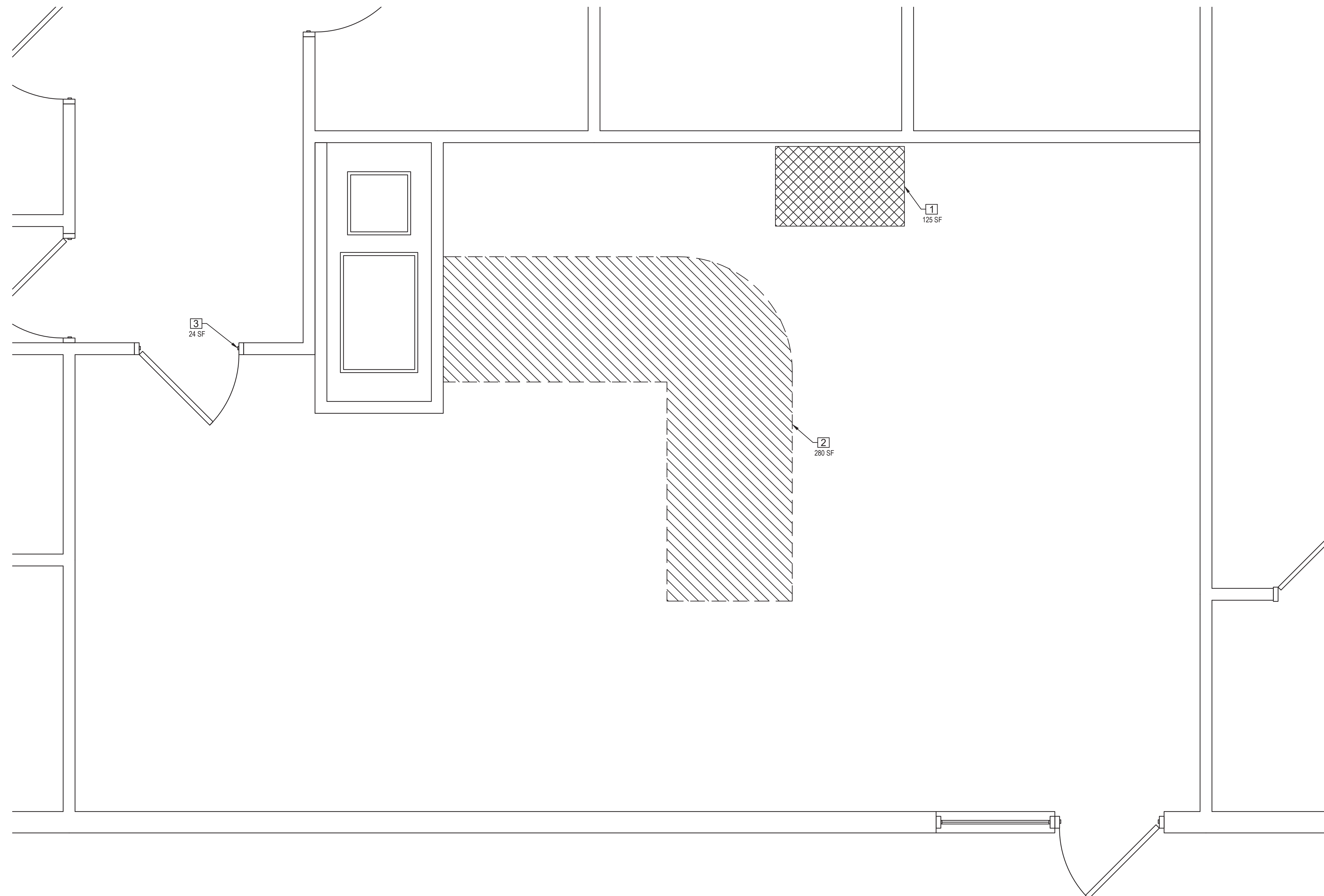
THE PINES HEALTHCARE &
REHABILITATION CENTER, OLEAN
CAMPUS
RESIDENT TOILET & STAFF LOCKER
ROOM RENOVATIONS
BID DOCUMENTS



PROJECT TEAM



G000



1 MECHANICAL PLAN
SCALE: 1/2" = 1'-0"

GENERAL DRAWING NOTES:

- A. THE CONTRACTOR SHALL PERFORM ALL WORK, INCLUDING AREA CONTAINMENT MEASURES AND REMOVAL, IN STRICT ACCORDANCE WITH THE PROJECT SPECIFICATION, ALL FEDERAL, STATE AND LOCAL REGULATIONS, AND ANY APPROPRIATE APPLICABLE VARIANCES AND SITE-SPECIFIC VARIANCES. APPLICABLE REGULATIONS INCLUDE, BUT ARE NOT LIMITED TO: OSHA 29 CFR 1926 SUBPART Z, 40 CFR PART 763 (AHERA), 40 CFR PART 61 SUBPART M (NESHAP STANDARD FOR DEMOLITION AND RENOVATION), AND NEW YORK STATE INDUSTRIAL CODE RULE 56.
- B. AREAS UNDER ABATEMENT SHALL BE PROPERLY POSTED WITH WARNING SIGNS AND SECURED TO PREVENT UNAUTHORIZED ENTRIES.
- C. THE CONTRACTOR IS RESPONSIBLE FOR KEEPING THE WORK AREA IN A CLEAN AND SAFE CONDITION, PROVIDING TEMPORARY PROTECTION, PROTECTING BUILDING MATERIALS SCHEDULED TO REMAIN, AND TO PREVENT UNAUTHORIZED ACCESS DURING THE DURATION OF THE PROJECT. THE CONTRACTOR IS RESPONSIBLE FOR THE CLEAN UP OF ALL CONTAINMENT WORK AREAS; SPECIFICALLY TAPE/ADHESIVES RESIDUE FROM ALL SURFACES. REPAIR OF DAMAGE CAUSED AS A RESULT OF INADEQUATE TEMPORARY PROTECTION OR CONTRACTOR ACTIVITIES, INCLUDING DAMAGE TO FINISHES RESULTING FROM CONTAINMENT MEASURES, WILL BE THE RESPONSIBILITY OF THE CONTRACTOR.
- D. CONTRACTOR SHALL REFER TO THE ENTIRE SET OF CONTRACT DOCUMENTS FOR COORDINATION OF SCOPE.
- E. THE LOCATION OF ANY ON-SITE STORAGE OF MATERIALS, EQUIPMENT, DUMPSTER/WASTE TRAILER AND DECONTAMINATION FACILITIES SHALL BE COORDINATED WITH AND APPROVED BY THE OWNER AND THEIR CONSULTANT.
- F. ALL ABATEMENT AND/OR REMOVAL OF ASBESTOS CONTAINING MATERIALS MUST PASS VISUAL INSPECTION AND CLEARANCE PROCEDURES PER 12NYCRR56 BEFORE GENERAL CONSTRUCTION WORK MAY COMMENCE.
- G. A SITE SPECIFIC VARIANCE FOR THIS PROJECT HAS NOT BEEN APPLIED FOR. ANY VARIANCE APPLICATION PREPARED BY THE CONTRACTOR OR ITS AGENT MUST BE SUBMITTED TO THE OWNER AND THEIR CONSULTANT FOR APPROVAL PRIOR TO SUBMISSION TO THE STATE OF NEW YORK DEPARTMENT OF LABOR ENGINEERING SERVICES FOR PROCESSING. THE OWNER SHALL BEAR NO ADDITIONAL COST AS A RESULT OF THE APPROVAL OF, THE DENIAL OF, AND/OR CONDITIONS SET FORTH WITHIN THE SITE SPECIFIC VARIANCE.
- H. THE PROJECT MANUAL INCLUDES EXISTING HAZARDOUS MATERIAL INFORMATION FOR CONTRACTOR REFERENCE. THE CONTRACTOR SHALL MAINTAIN A COPY OF THE REPORT ON-SITE FOR THE DURATION OF THE PROJECT. QUANTITIES REPORTED WITHIN THE REPORT ARE APPROXIMATED.
- I. IF DURING PROJECT WORK A SUSPECT HAZARDOUS MATERIAL IS FOUND THAT WILL BE IMPACTED BY THE SCOPE OF WORK, AND WHICH HAS NOT BEEN TESTED AS DOCUMENTED IN THE PRE-RENOVATION INSPECTION REPORTS, THE CONTRACTOR SHALL CEASE OPERATIONS, AND NOTIFY THE OWNER AND THEIR CONSULTANT IMMEDIATELY.
- J. THE CONTRACTOR IS RESPONSIBLE FOR COORDINATING WITH THE OWNER'S REPRESENTATIVE REGARDING THE DE-ENERGIZING OF ALL DEVICES, EQUIPMENT, AND FIXTURES TO BE REMOVED PRIOR TO THE COMMENCEMENT OF ABATEMENT ACTIVITIES.

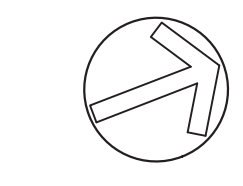
KEYED ASBESTOS REMOVAL NOTES:

NOTE: NOT ALL REMOVAL NOTES ARE UTILIZED ON EVERY SHEET. REFERENCE SPECIFICATION 028213.

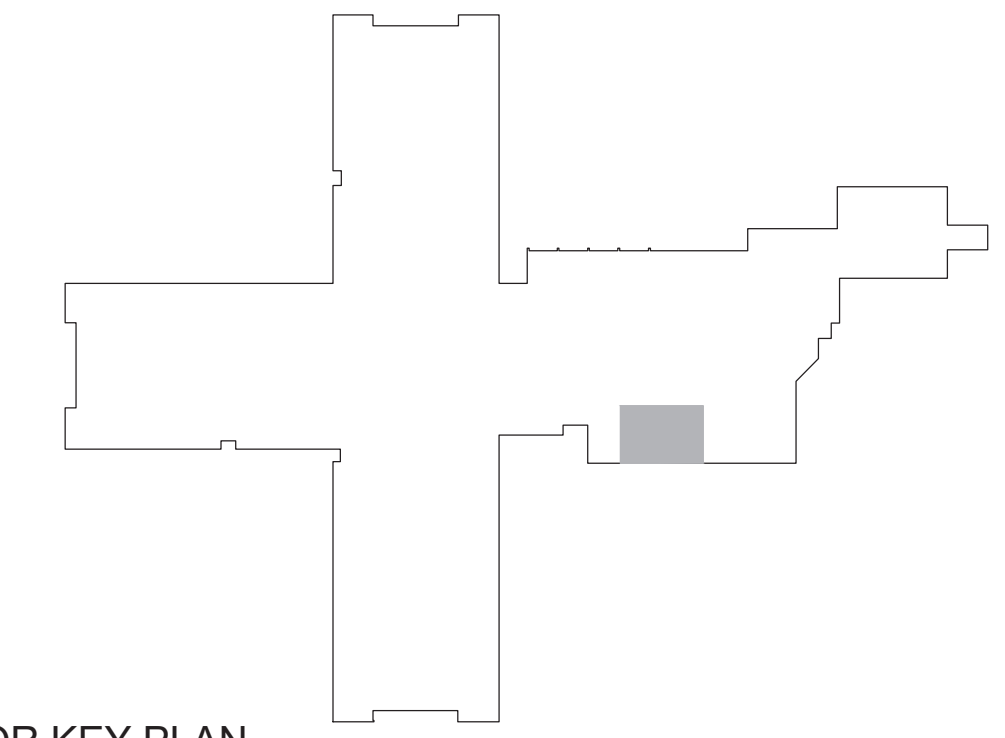
- 1. REMOVE AND DISPOSE OF ASBESTOS CONTAINING HOT WATER TANK INSULATION. ASSOCIATED FIBERGLASS PIPE INSULATION AND MUDDIED ELBOWS IN CONTAINMENT SHALL BE PROTECTED OR REMOVED AS ASBESTOS-CONTAMINATED WASTE. REMOVAL IS CONSIDERED OSHA CLASS I WORK. ALL WASTE IS CONSIDERED AN EPA REGULATED ASBESTOS CONTAINING MATERIAL.
- 2. REMOVE AND PROPERLY DISPOSE OF ASBESTOS CONTAINING BREECHING INSULATION. REMOVAL IS CONSIDERED OSHA CLASS I WORK. ALL WASTE IS CONSIDERED AN EPA REGULATED ASBESTOS CONTAINING MATERIAL.
- 3. REMOVE AND PROPERLY DISPOSE OF ASSUMED ASBESTOS CONTAINING FIRE DOOR AND ASSOCIATED FIRE DOOR FRAME. REMOVAL IS CONSIDERED OSHA CLASS I WORK. ALL WASTE IS CONSIDERED AN EPA REGULATED ASBESTOS CONTAINING MATERIAL.

LEGEND

- HATCH 1 APPROXIMATE LOCATION OF HOT WATER TANK INSULATION. REFERENCE KEYED ASBESTOS REMOVAL NOTE 1.
- HATCH 2 APPROXIMATE LOCATION OF BREECHING INSULATION. REFERENCE KEYED ASBESTOS REMOVAL NOTE 2.



FIRST FLOOR KEY PLAN



OLEAN CAMPUS
2254 WEST STATE STREET,
OLEAN, N.Y. 14760
CATTARAUGUS COUNTY
DEPARTMENT OF PUBLIC WORKS
8810 ROUTE 242
LITTLE VALLEY, N.Y. 14755

CATT COUNTY PINES
WATER HEATER
REPLACEMENT

BID DOCUMENTS

Centerpointe Corporate Park
375 Esjay Road, Suite 200
Williamsville, NY 14221
www.wendelcompanies.com
p:716.688.0766 f:716.625.6825
Wendel WD Architecture, Engineering, Surveying and
Landscape Architecture, P.C.

SIENNA
ENVIRONMENTAL TECHNOLOGIES
350 Elmwood Avenue Buffalo, New York 14222
ph: 716.332.3134 www.sienanet.com

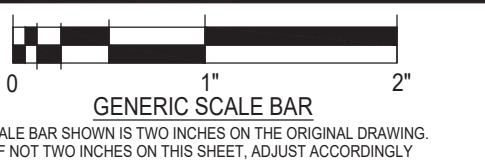


NOTE:
THIS DOCUMENT AND THE IDEAS AND DESIGNS INCORPORATED HEREIN ARE AN INSTRUMENT OF PROFESSIONAL SERVICE, AS THE PROPERTY OF WENDEL WD ARCHITECTURE, ENGINEERING, SURVEYING AND LANDSCAPE ARCHITECTURE, P.C. AND IS NOT TO BE USED IN WHOLE OR IN PART FOR ANY OTHER PROJECT WITHOUT THE WRITTEN AUTHORIZATION OF WENDEL UNAUTHORIZED ALTERATION OR ADDITION TO ANY SURVEY DRAWING, DESIGN, SPECIFICATION, PLAN OR REPORT IS A VIOLATION OF SECTION 7209, PROVISION 2 OF THE NEW YORK STATE EDUCATION LAW.

NO.	REVISIONS	DATE
0		5/27/2019

DWG TITLE

PARTIAL FIRST FLOOR PLAN



GENERIC SCALE BAR
SCALE BAR SHOWN IS TWO INCHES ON THE ORIGINAL DRAWING. IF NOT TWO INCHES ON THIS SHEET, ADJUST ACCORDINGLY.

DATE	MARCH 11, 2020
SCALE	AS NOTED
DWN.	ES
CHK.	SF
PROJ. No.	3076-67
DWG. No.	

HM100



OLEAN CAMPUS
2254 WEST STATE STREET,
OLEAN, N.Y. 14760
CATTARAUGUS COUNTY
DEPARTMENT OF PUBLIC WORKS
8810 ROUTE 242
LITTLE VALLEY, N.Y. 14755

**CATT COUNTY PINES
WATER HEATER
REPLACEMENT**

BID DOCUMENTS



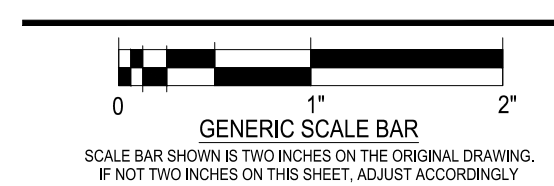
Wendel WD Architecture, Engineering, Surveying and
Landscape Architecture, P.C.



NOTE:
THIS DOCUMENT AND THE IDEAS AND DESIGNS INCORPORATED HEREIN AS AN INSTRUMENT OF PROFESSIONAL SERVICE IS THE PROPERTY OF WENDEL WD ARCHITECTURE, ENGINEERING, SURVEYING AND LANDSCAPE ARCHITECTURE, P.C. AND IS NOT TO BE USED IN WHOLE OR IN PART FOR ANY OTHER PROJECT WITHOUT THE WRITTEN AUTHORIZATION OF WENDEL, UNAUTHORIZED ALTERATION OR ADDITION TO ANY SURVEY DRAWING, DESIGN, SPECIFICATION, PLAN OR REPORT IS A VIOLATION OF SECTION 7209, PROVISION 2 OF THE NEW YORK STATE EDUCATION LAW.

NO.	REVISIONS	DATE
0	BID DOCUMENTS	5/2/2019

**SYMBOLS, ABBREVIATIONS,
AND GENERAL NOTES**



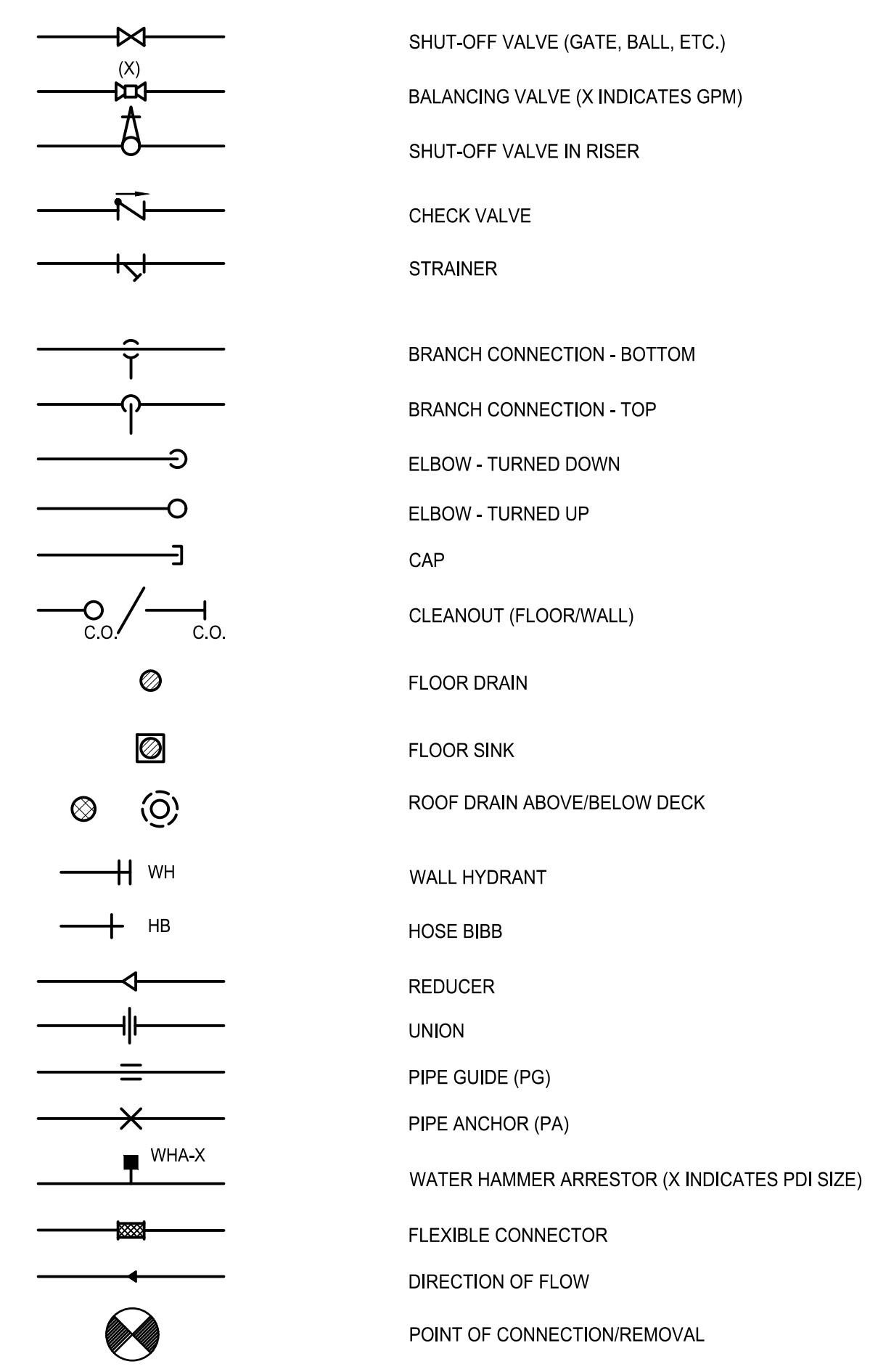
DATE: MARCH 23, 2020
SCALE: AS NOTED
DWN: TJP CHK: JTJ
PROJ. No. 3076-67
DWG. No.

P001

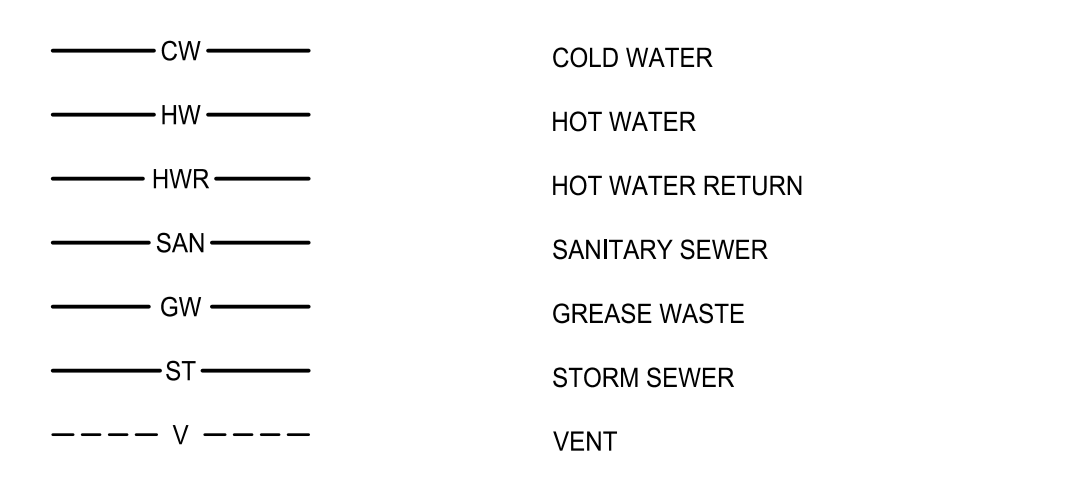
PLUMBING ABBREVIATIONS

AC	AIR COMPRESSOR	HW	HOT WATER
AD	ACCESS DOOR	HWFU	HOT WATER FIXTURE UNIT
AF	ABOVE FINISHED FLOOR	HWCP	HOT WATER CIRCULATING PUMP
AFG	ABOVE FINISHED GRADE	HWR	HOT WATER RECIRCULATION
AR	APPLIANCE REGULATOR	HWT	HOT WATER TANK
ASC	ABOVE SUSPENDED CEILING		
AWC	AUTOMATIC WASHER CONNECTION	INV. EL.	INVERT ELEVATION
		KS	KITCHEN SINK
BAV	BALANCING VALVE	LAV	LAVATORY
BC	BALANCING COCK	LT	LAUNDRY TUB
BFP	BACKFLOW PREVENTER	LPD	LOW POINT DRAIN
BT	BATHTUB		
BTU	BRITISH THERMAL UNIT	M	METER
BV	BALL VALVE	MC	MECHANICAL CONTRACTOR
		MH	MANHOLE
CA	COMPRESSED AIR	MR	MEDIUM PRESSURE REGULATOR
CB	CATCH BASIN	MSB	MOP SERVICE BASIN
CFH	CUBIC FEET PER HOUR	MV	MIXING VALVE
CHKV	CHECK VALVE		
CI	CAST IRON	NIC	NOT IN CONTRACT
CO	CLEANOUT	NTS	NOT TO SCALE
COMP	COMPARTMENT	OI	OIL INTERCEPTOR
CONN	CONNECTION	OS&Y	OIL SCREW & YOKE
CSS	CLINICAL SERVICE SINK	OSI	OIL SEDIMENT INTERCEPTOR
CW	COLD WATER	OSW	OPEN SITE WASTE
CW/FU	COLD WATER FIXTURE UNIT		
CWP	CIRCULATING WATER PUMP	P	PUMP
		PC	PLUMBING CONTRACTOR
D	DRAIN LINE	PD	PUMP DISCHARGE
DF	DRINKING FOUNTAIN	PRV	PRESSURE REDUCING VALVE
DFU	DRAINAGE FIXTURE UNIT	PT	PLASTER TRAP
DIP	DUCTILE IRON PIPE	PVC	POLYVINYL CHLORIDE
DIW	DEIONIZED WATER		
DN	DOWN	RD	ROOF DRAIN
DS	DOWNSPOUT	RV	RELIEF VENT
DSN	DOWN SPOUT NOZZLE	RWL	RAIN WATER LEADER
DWH	DOMESTIC WATER HEATER		
DWV	DROP TO WASTE/RISE TO VENT	SAN	SANITARY SEWER
		SCW	SOFTENED COLD WATER
EC	ELECTRICAL CONTRACTOR	SE	SEWAGE EJECTOR
EST	EMERGENCY STORM SEWER	SF	SQUARE FOOT
ET	EXPANSION TANK	SHR	SHOWER
EWIC	ELECTRIC WATER COOLER	SK	SINK
EW	ELECTRIC WATER HEATER	SMP	SUMP PUMP
EXST	EXISTING	SS	SERVICE SINK
		SSS	SURGICAL SERVICE SINK
F	FAHRENHEIT DEGREES	ST	STORM SEWER
FACP	FIRE ALARM CONTROL PANEL	STN	STRAINER
FBO	FURNISHED BY OTHERS	SWE	STORM WATER EJECTOR
FCO	FLOOR CLEANOUT		
FCF	FLOW CONTROL FITTING (GREASE INTERCEPTOR)	TFA	TO FLOOR ABOVE
FD	FLOOR DRAIN	TFB	TO FLOOR BELOW
FDC	FIRE DEPARTMENT CONNECTION	TP	TRAP PRIMER
FE	FIRE EXTINGUISHER	TW	TEMPERED WATER
FEC	FIRE EXTINGUISHER CABINET		
FFA	FROM FLOOR ABOVE	UR	URINAL
FFB	FROM FLOOR BELOW		
FFE	FINISHED FLOOR ELEVATION	V	VENT
FH	FIRE HYDRANT	VAC	VACUUM
FHC	FIRE HOSE CABINET	VB	VACUUM BREAKER
FHP	FIRE PROTECTION PIPING	VR	VENT RISE
FS	FLOOR SINK	VTR	VENT THROUGH ROOF
FT	FOOTING TILE		
		WC	WATER CLOSET
G	GAS	W.C.	WATER COLUMN
GC	GENERAL CONTRACTOR	WCO	WALL CLEANOUT
GI	GREASE INTERCEPTOR	WF	WASH FOUNTAIN
GLV	GLOBE VALVE	WG	WATER GAUGE
GM	GAS METER	WH	WALL HYDRANT
GPH	GALLONS PER HOUR	WHA	WATER HAMMER ARRESTOR
GPM	GALLONS PER MINUTE	WM	WATER METER
GT	GREASE TRAP	WTCS	WATER TEMPERATURE CONTROL STATION
GTV	GATE VALVE		
GWH	GAS WATER HEATER		
HB	HOSE BIBB		
HP	HORSEPOWER		

PLUMBING SYMBOLS - VALVES AND SPECIALTIES

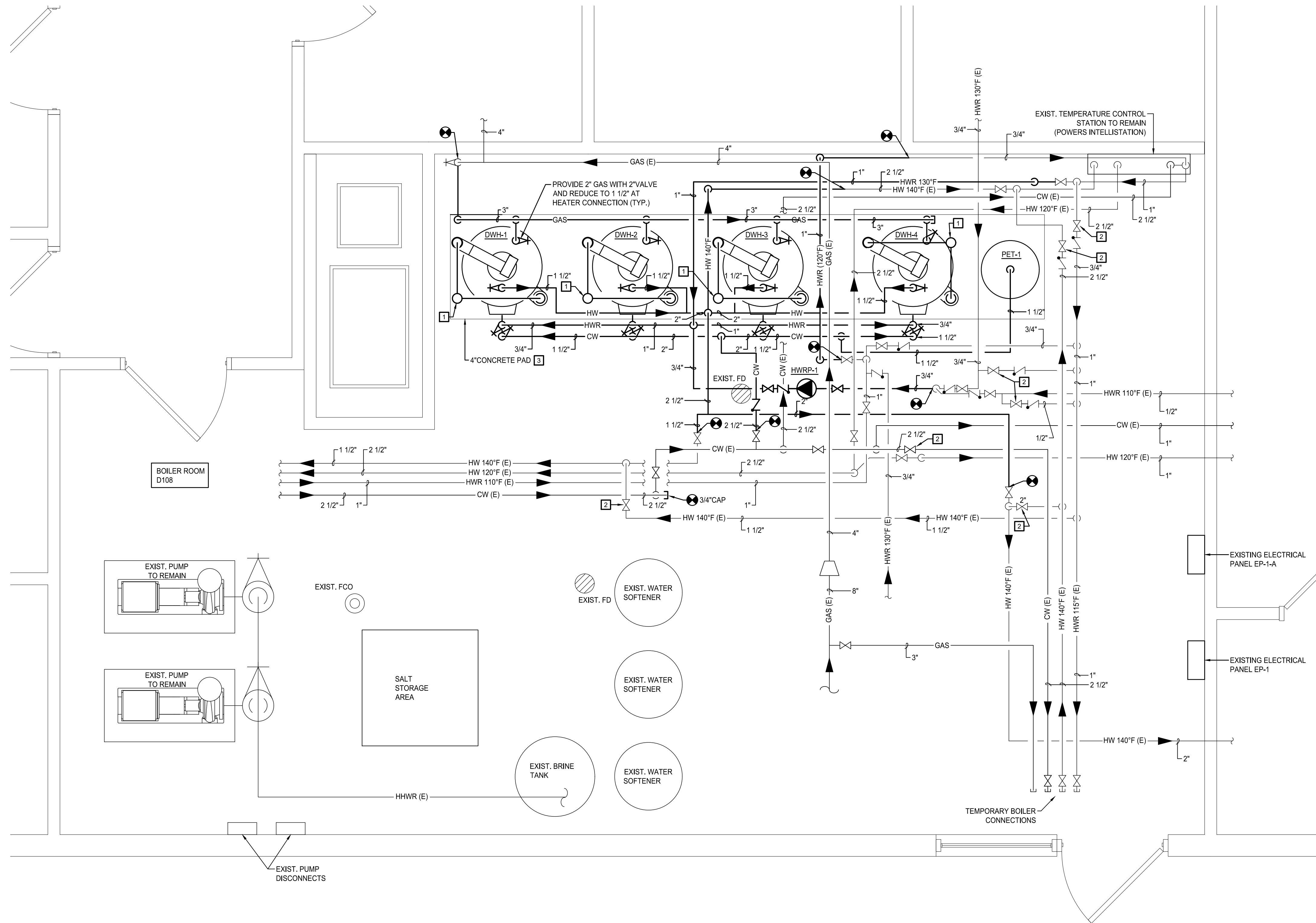


PLUMBING SYMBOLS - PIPING DESIGNATIONS



GENERAL NOTES

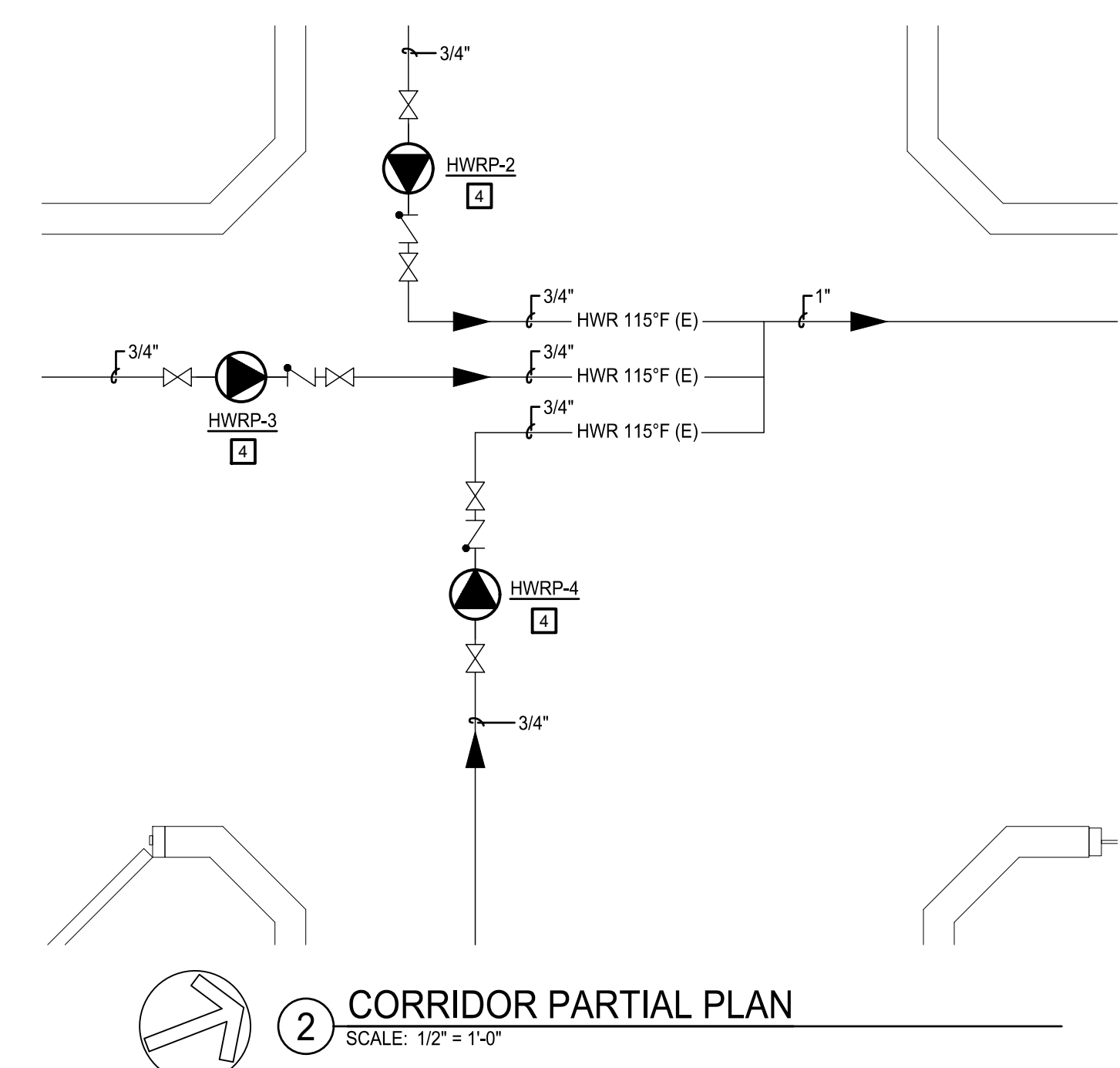
- THIS LEGEND SHEET IS FOR CONTRACTOR REFERENCE ONLY. NOT ALL SYMBOLS AND/OR ABBREVIATIONS MAY APPLY TO THIS PARTICULAR PROJECT. ANY ADDITIONS OR OMISSIONS FROM THIS LEGEND SHEET DOES NOT IMPLY INCLUSION AND/OR EXCLUSION OF ANY PARTICULAR ITEM FROM THE PROJECT.
- THE PLANS ARE DIAGRAMMATIC AND INDICATE ONLY THE SIZE AND GENERAL ARRANGEMENT OF PIPING AND EQUIPMENT. EXACT LOCATION OF ALL ELEMENTS SHALL BE DETERMINED AS WORK PROGRESSES. IN COOPERATION AND COORDINATION WITH THE WORK OF ALL OTHER TRADES. IT IS NOT INTENDED TO SHOW EVERY ITEM OF WORK OR MINOR PIECE OF EQUIPMENT, BUT THE CONTRACTOR SHALL FURNISH AND INSTALL WITHOUT ADDITIONAL REMUNERATION ANY COMPONENT NECESSARY TO COMPLETE THE SYSTEM IN ACCORDANCE WITH THE BEST PRACTICE OF THE TRADE.
- ITEMS OF WORK OR EQUIPMENT SHOWN ON THE DRAWINGS ONLY, OR CALLED FOR IN THE SPECIFICATIONS ONLY, SHALL BE FURNISHED AND INSTALLED IN THE SAME MANNER AS IF THEY APPEARED ON BOTH THE DRAWINGS AND SPECIFICATIONS.
- DRAWINGS DO NOT INDICATE ALL OFFSETS, CHANGES IN ELEVATIONS, ETC. WHICH MAY BE REQUIRED. THE CONTRACTOR SHALL MAKE SUCH CHANGES IN PIPING AND LOCATION OF EQUIPMENT, ETC. TO ACCOMMODATE WORK WITH THAT OF OTHER CONTRACTORS.
- INSTALL EQUIPMENT AND PIPING TO AVOID INTERFERENCE WITH THE OPERATION OR SERVICING AND MAINTENANCE OF EQUIPMENT.
- PIPES PENETRATING FIRE WALLS AND FLOORS SHALL BE FIRESTOPPED AS SPECIFIED. REFER TO THE ARCHITECTURAL DRAWINGS FOR FIRE WALL LOCATIONS.
- ALL PHYSICAL ATTRIBUTES OF EQUIPMENT AND DEVICES ARE BASED ON THOSE MANUFACTURERS LISTED IN THE SPECIFICATIONS AND/OR THE EQUIPMENT SCHEDULES. THE RESPECTIVE CONTRACTORS ARE RESPONSIBLE FOR ALL CHANGES BROUGHT ABOUT BY USE OF ITEMS BY OTHER MANUFACTURERS. THE ARCHITECT/ENGINEER HAS RESERVED THE RIGHT TO REJECT ITEMS BY OTHER MANUFACTURERS IF THOSE ITEMS DO NOT MATCH THE PHYSICAL ATTRIBUTES OF THE MANUFACTURERS LISTED.
- COMPLY WITH THE NEW YORK STATE UNIFORM BUILDING CODE, 2015 INTERNATIONAL PLUMBING CODE, AND THE 2015 INTERNATIONAL ENERGY CONSERVATION CODE.



1 MECHANICAL ROOM PLAN
SCALE: 1/2" = 1'-0"

ASBESTOS AWARENESS NOTES:
 ASBESTOS-CONTAINING MATERIALS HAVE BEEN IDENTIFIED FOR THIS PROJECT. REFER TO HAZARDOUS MATERIALS INSPECTION REPORT (FOUND WITHIN PROJECT MANUAL), COORDINATE REMOVALS WITH ABATEMENT DRAWINGS. ANY REMOVAL OR DISTURBANCE TO AN ASBESTOS CONTAINING MATERIAL MUST BE CONDUCTED BY A LICENSED CONTRACTOR.

- CONSTRUCTION NOTES:**
1. PROVIDE 4" EXHAUST AND 4" INTAKE AIR FROM HEATER TO ECCENTRIC VENT KIT UP THROUGH ROOF (TYPICAL AT ALL 4 HEATERS). VENT AND INTAKE PIPE TO BE SCHEDULE 40 CPVC. COORDINATE ROUTING OF PIPING WITH LIGHTS.
 2. VALVE TO BE CLOSED ONCE WATER HEATERS ARE OPERATIONAL.
 3. PROVIDE 4" CONCRETE PAD FOR WATER HEATERS AND EXPANSION TANK. PAD TO EXTEND 4" BEYOND FOOTPRINT OF EQUIPMENT IN ALL DIRECTIONS.
 4. REMOVE AND REPLACE EXISTING B&G PL-308 PUMPS LOCATED WITHIN CORRIDOR CEILING. REFER TO EQUIPMENT SCHEDULES FOR ADDITIONAL INFORMATION.



2 CORRIDOR PARTIAL PLAN
SCALE: 1/2" = 1'-0"



FIRST FLOOR KEY PLAN



OLEAN CAMPUS
 2254 WEST STATE STREET,
 OLEAN, N.Y. 14760
 CATTARAUGUS COUNTY
 DEPARTMENT OF PUBLIC WORKS
 8810 ROUTE 242
 LITTLE VALLEY, N.Y. 14755

**CATT COUNTY PINES
 WATER HEATER
 REPLACEMENT**

BID DOCUMENTS

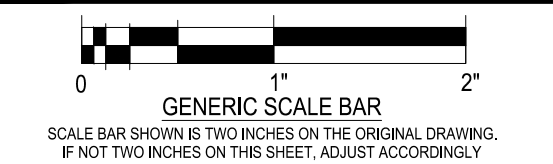
Centerpointe Corporate Park
 375 Esjay Road, Suite 200
 Williamsville, NY 14221
 www.wendelcompanies.com
 p.716.688.0766 f.716.625.6825
 Wendel WD Architecture, Engineering, Surveying and
 Landscape Architecture, P.C.



NOTE:
 THIS DOCUMENT AND THE IDEAS AND DESIGNS INCORPORATED HEREIN, AS AN INSTRUMENT OF PROFESSIONAL SERVICE, IS THE PROPERTY OF WENDEL WD ARCHITECTURE, ENGINEERING, SURVEYING AND LANDSCAPE ARCHITECTURE, P.C. AND IS NOT TO BE USED IN WHOLE OR IN PART, FOR ANY OTHER PROJECT WITHOUT THE WRITTEN AUTHORIZATION OF WENDEL, UNAUTHORIZED ALTERATION OR ADDITION TO ANY SURVEY DRAWING, DESIGN, SPECIFICATION, PLAN OR REPORT IS A VIOLATION OF SECTION 7209, PROVISION 2 OF THE NEW YORK STATE EDUCATION LAW.

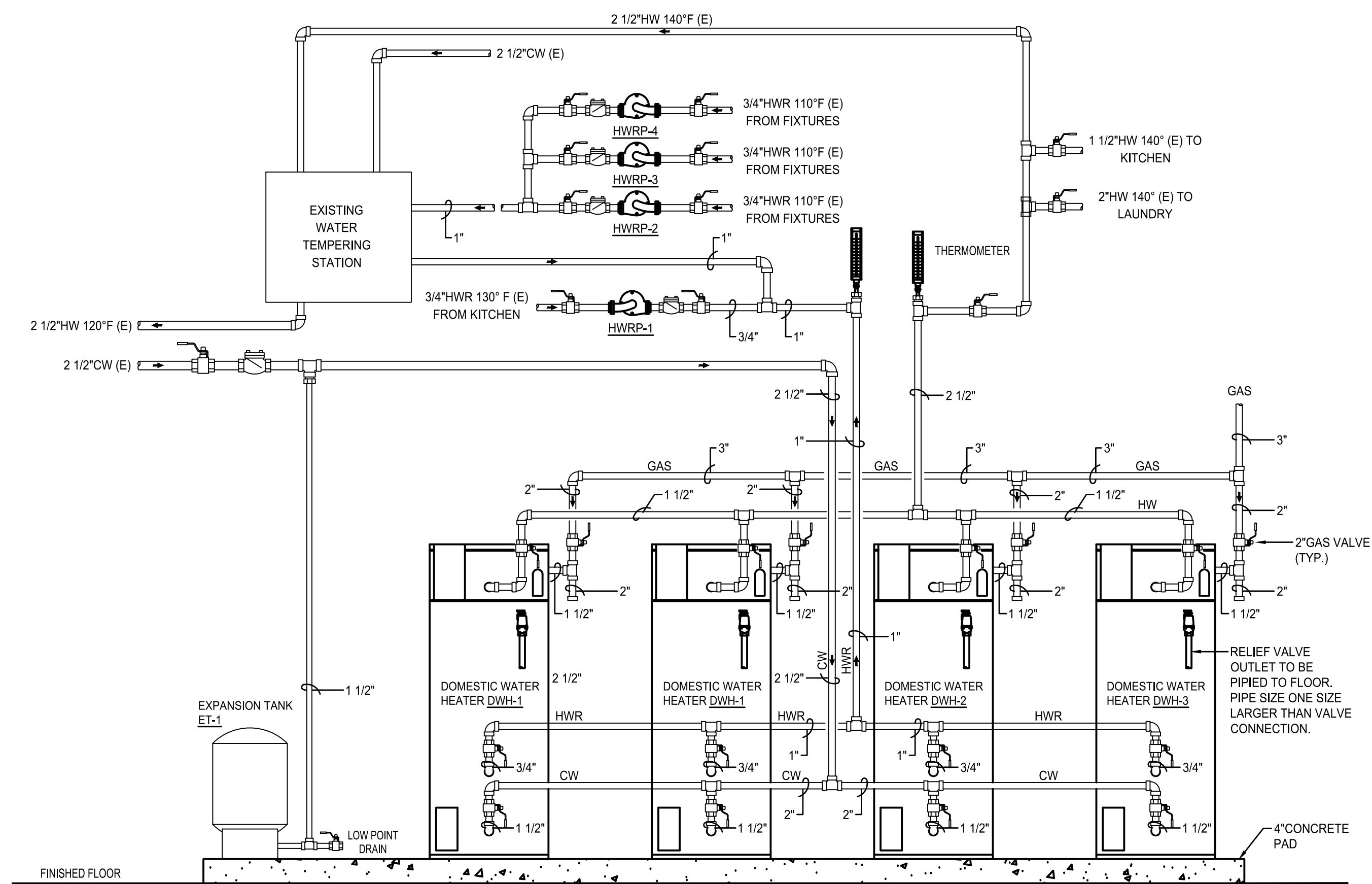
NO.	REVISIONS	DATE
0	BID DOCUMENTS	5/2/2019

**PARTIAL FIRST
 FLOOR PLAN**

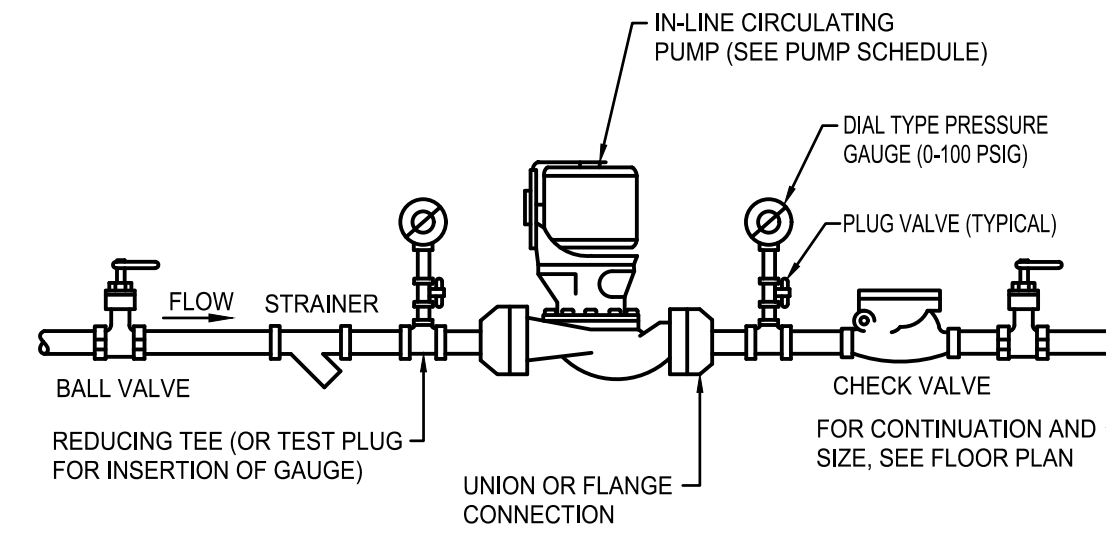


DATE	MARCH 23, 2020
SCALE	AS NOTED
DWN	TJP
CHK	JTW
PROJ. No.	3076-67
DWG. No.	

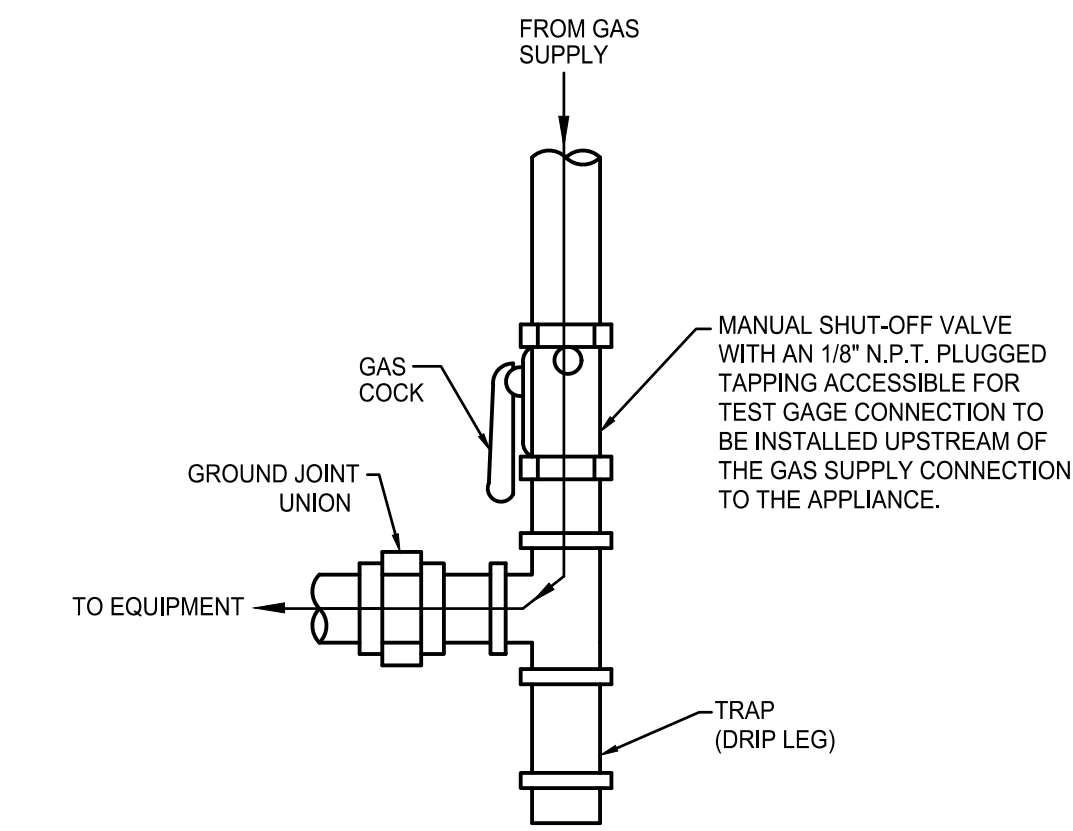
P101



1 WATER HEATER DETAIL
SCALE: NONE



2 IN-LINE CIRCULATING PUMP DETAIL
SCALE: NONE

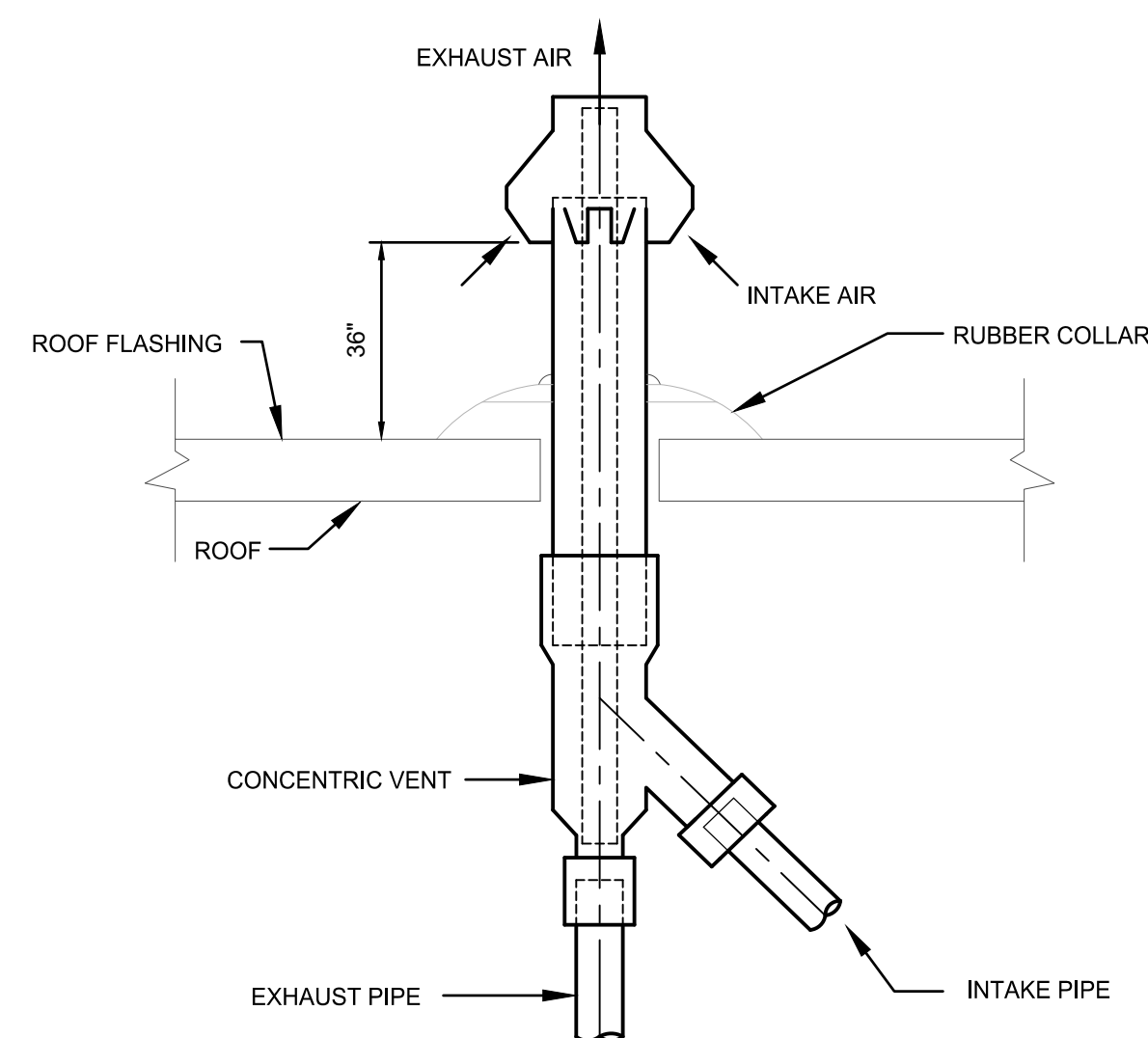


3 GAS CONNECTION TO EQUIPMENT DETAIL
SCALE: NONE

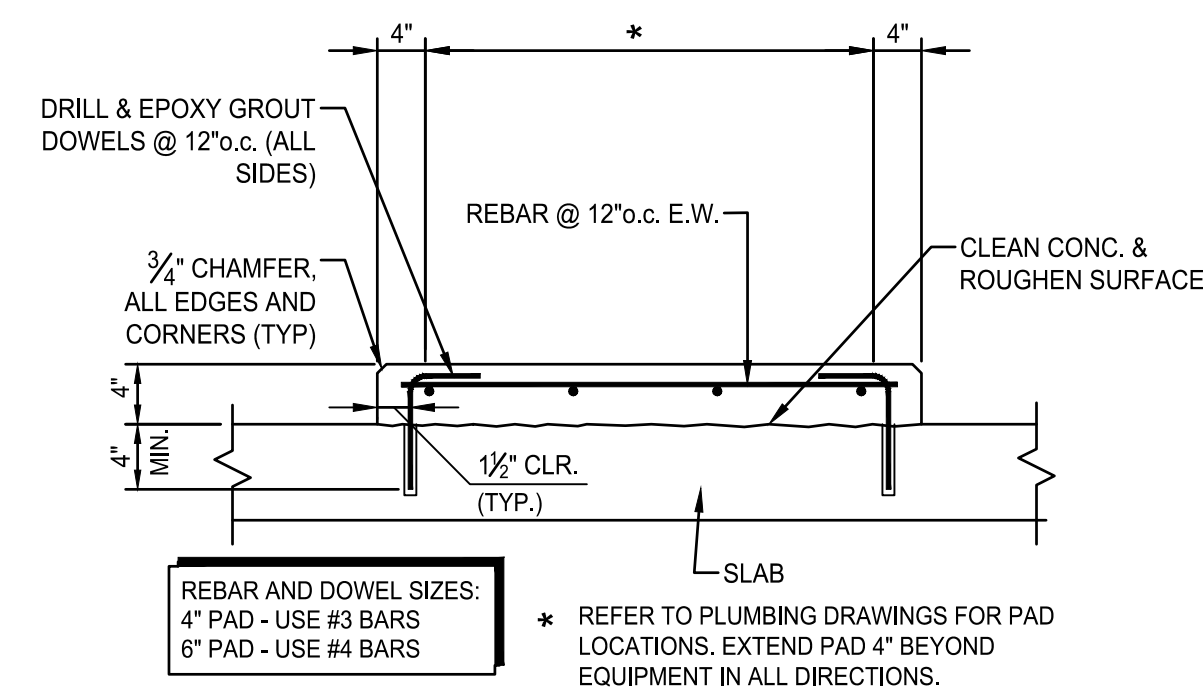
DOMESTIC WATER HEATER SCHEDULE (DWH)											
PLAN DESIGNATION	MANUFACTURER MODEL NO.	TYPE	LOCATION	STORAGE CAPACITY (GAL.)	GALLONS/HR @100° F RISE	CAPACITY		ELECTRICAL DATA			NOTES
						INPUT (MBH)	OUTPUT	AMPS	VOLTS/ PHASE	HERTZ	
DWH-1	AO SMITH BTH-500	GAS FIRED CONDENSING TANK	MECH ROOM	119	576	500	475	5	120/1Ø	60	1
DWH-2	AO SMITH BTH-500	GAS FIRED CONDENSING TANK	MECH ROOM	119	576	500	475	5	120/1Ø	60	1
DWH-3	AO SMITH BTH-500	GAS FIRED CONDENSING TANK	MECH ROOM	119	576	500	475	5	120/1Ø	60	1
DWH-4	AO SMITH BTH-500	GAS FIRED CONDENSING TANK	MECH ROOM	119	576	500	475	5	120/1Ø	60	1

NOTES:

- PROVIDE THE FOLLOWING STANDARD AND OPTIONAL EQUIPMENT:
 - PIPE MOUNTED TEMPERATURE GAUGES
 - COPPER FINNED WATER TUBES
 - REDUNDANT GAS VALVES
 - ADJUSTABLE AQUASTAT WITH ADJUSTABLE DIFFERENTIAL
 - ASME PRESSURE/TEMPERATURE RELIEF VALVE
 - LOW GAS PRESSURE SWITCH
 - MAIN GAS PRESSURE REGULATOR
 - WATER FLOW SWITCH
 - REMOTE MANIFOLD GAS PRESSURE TAP
 - STAINLESS STEEL BURNER
 - ELECTRONIC CONTROLS, 24 VOLT, INTERMITTENT ELECTRONIC IGNITION
 - ELECTRIC DISCONNECT SWITCH
- PROVIDE CONDUIT AND WIRE FROM ELECTRICAL PANEL EP-1 CIRCUITS 8 AND 9. COMBINE TWO HEATERS ON A SINGLE 20AMP CIRCUIT.
 - CONCENTRIC VENT KIT
 - CONDENSATE NEUTRALIZATION KIT



4 CONCENTRIC VENT TERMINATION DETAIL FOR GAS FIRED WATER HEATER
SCALE: NONE



5 TYPICAL HOUSEKEEPING PAD DETAIL
SCALE: NONE

HOT WATER RETURN PUMP SCHEDULE (HWRP)													
PLAN DESIGNATION	MANUFACTURER MODEL NO.	SERVICE	LOCATION	TEMPERATURE (DEG. °F)	FLOW (GPM)	TOTAL HEAD (FT)	POWER (HP)	RPM	ELECTRICAL DATA				NOTES
									VOLTS	PHASE	HERTZ	F.L.A.MPS	
HWRP-1	BELL & GOSSETT ECOIRC XL N 20-35	HOT WATER TO KITCHEN	MECHANICAL ROOM	160	5	8	1/12	3250	120	1	60	1.3	1,2,3,5
HWRP-2	BELL & GOSSETT ECOIRC XL N 36-45	HOT WATER TO FIXTURES	MECHANICAL ROOM	160	4.5	16	1/6	3250	120	1	60	3.0	1,2,4
HWRP-3	BELL & GOSSETT ECOIRC XL N 36-45	HOT WATER TO FIXTURES	MECHANICAL ROOM	160	4.5	16	1/6	3250	120	1	60	3.0	1,2,4
HWRP-4	BELL & GOSSETT ECOIRC XL N 36-45	HOT WATER TO FIXTURES	MECHANICAL ROOM	160	4.5	16	1/6	3250	120	1	60	3.0	1,2,4

NOTES:

- STAINLESS STEEL BODY.
- PROGRAM PUMPS FOR DELTA T CONSTANT CONTROL.
- PROVIDE ELECTRICAL DISCONNECT.
- REUSE EXISTING CONDUIT AND WIRE. REPLACE EXISTING 30AMP 3PH BREAKER WITH 3 SINGLE POLE 20 AMP BREAKERS IN ELECTRICAL PANEL EP-1-A. CIRCUITS 9,11, AND 13.
- PROVIDE CONDUIT AND WIRE FROM ELECTRICAL PANEL EP-1-A. COMBINE HWRP-1 AND HWRP-2 PUMPS ON CIRCUIT 9.

PLUMBING EXPANSION TANK SCHEDULE (PET)										
PLAN DESIGNATION	MANUFACTURER MODEL NO.	LOCATION	TANK TYPE	TANK VOLUME (GAL.)	ACCEPTANCE VOLUME (GAL.)	HEIGHT (IN.)	DIAMETER (IN.)	INLET (IN.)	FULL WEIGHT (LBS)	NOTES
PET-1	WESSELS TXA200	MECHANICAL ROOM	BLADDER	53	53	43	24	1 1/2"	210	ASME RATED, APPROVED FOR POTABLE WATER USE.



OLEAN CAMPUS
2254 WEST STATE STREET,
OLEAN, N.Y. 14760
CATTARAUGUS COUNTY
DEPARTMENT OF PUBLIC WORKS
8810 ROUTE 242
LITTLE VALLEY, N.Y. 14755

CATT COUNTY PINES
WATER HEATER
REPLACEMENT

BID DOCUMENTS



Centerpointe Corporate Park
375 Esjay Road, Suite 200
Williamsville, NY 14221
www.wendelcompanies.com
p:716.688.0766 f:716.625.6825

Wendel WD Architecture, Engineering, Surveying and Landscape Architecture, P.C.

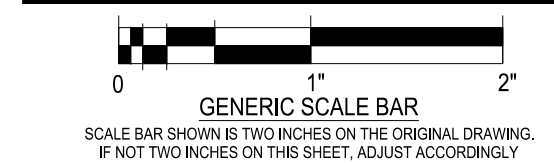


NOTE:
THIS DOCUMENT AND THE IDEAS AND DESIGNS INCORPORATED HEREIN, AS AN INSTRUMENT OF PROFESSIONAL SERVICE, IS THE PROPERTY OF WENDEL ARCHITECTURE, ENGINEERING, SURVEYING AND LANDSCAPE ARCHITECTURE, P.C. AND IS NOT TO BE USED IN WHOLE OR IN PART, FOR ANY OTHER PROJECT WITHOUT THE WRITTEN AUTHORIZATION OF WENDEL ARCHITECTURE, ENGINEERING, SURVEYING AND LANDSCAPE ARCHITECTURE, P.C. UNAUTHORIZED ALTERATION OR ADDITION TO ANY SURVEY DRAWING, DESIGN SPECIFICATION, PLAN OR REPORT IS A VIOLATION OF SECTION 7209, PROVISION 2 OF THE NEW YORK STATE EDUCATION LAW.

NO.	REVISIONS	DATE
0		5/2/2019

DWG. TITLE

PLUMBING DETAILS AND SCHEDULES



DATE: MARCH 23, 2020
SCALE: AS NOTED
DWG: JTP
PROJ. No. 3076-67
DWG. No.