



CATTARAUGUS COUNTY COUNTYWIDE TRAIL SYSTEM PLAN

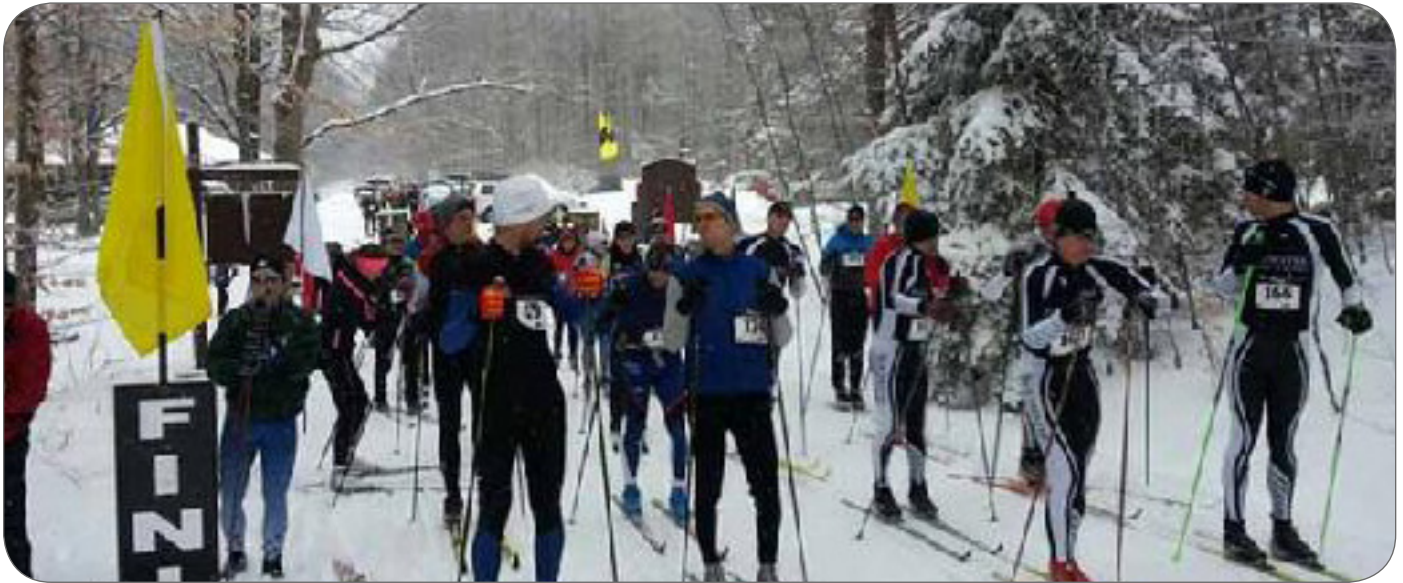
EXECUTIVE SUMMARY

PREPARED FOR: CATTARAUGUS COUNTY
PREPARED BY: BARTON & LOGUIDICE, DPC
NOVEMBER 14, 2017





1.0 EXECUTIVE SUMMARY



INTRODUCTION

The purpose of the Cattaraugus County Countywide Trail System Plan is to preserve and promote the County's natural resources, maximize opportunities for outdoor recreation, and capitalize on the outdoor tourism industry.

Project goals include:

- Surveying existing trails,
- Determining the feasibility of connecting existing trails within and beyond Cattaraugus County,
- Identifying potential trail corridors,
- Recommending trail improvements and potential new trails.



TRAIL BENEFITS

The extensive benefits of trails were documented for this study. These benefits include decreased impact on the environment through reduced motor vehicle usage and increased environmental awareness, health benefits through increased physical activity and reduced stress, and economic benefits through increased tourism.

INVENTORY & ANALYSIS

The study included an inventory and analysis phase where the existing conditions in and around Cattaraugus County were assessed. Topography, soils, ecological character, habitat, drainage, wetlands, land use, municipal boundaries, destinations, property ownership, access, circulation, and infrastructure were evaluated. The project addresses a number of opportunities and constraints which include: an extensive park system within Cattaraugus County, other types of tourism within the County, habitat diversity, scenic views, historic resources, and property ownership.

TRAIL USER GROUPS

Cattaraugus County has a robust trail system, used by many different user groups, each with its own needs and preferences. This section discusses different types of trail users, including bicyclists, pedestrians, emerging user groups, winter sports enthusiasts and equestrians.

The County has many volunteer organizations that represent different trail user groups. These organizations are an asset to the County trail system. This section also discusses how the County can benefit most from these organizations and provide additional coordination between them.

COMMUNITY INPUT

The planning process for this study included outreach to both the general public and to key stakeholders. Representatives from various organizations served on the steering committee, and provided continuity and study oversight. In addition, input from the public was solicited using web based crowdsourcing applications, online mapping and online surveys.



RECOMMENDATIONS

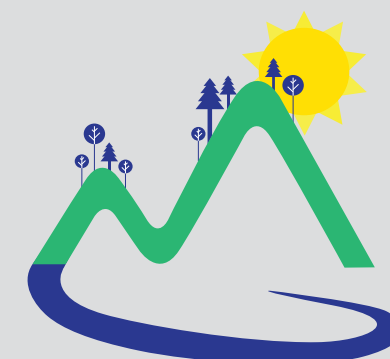
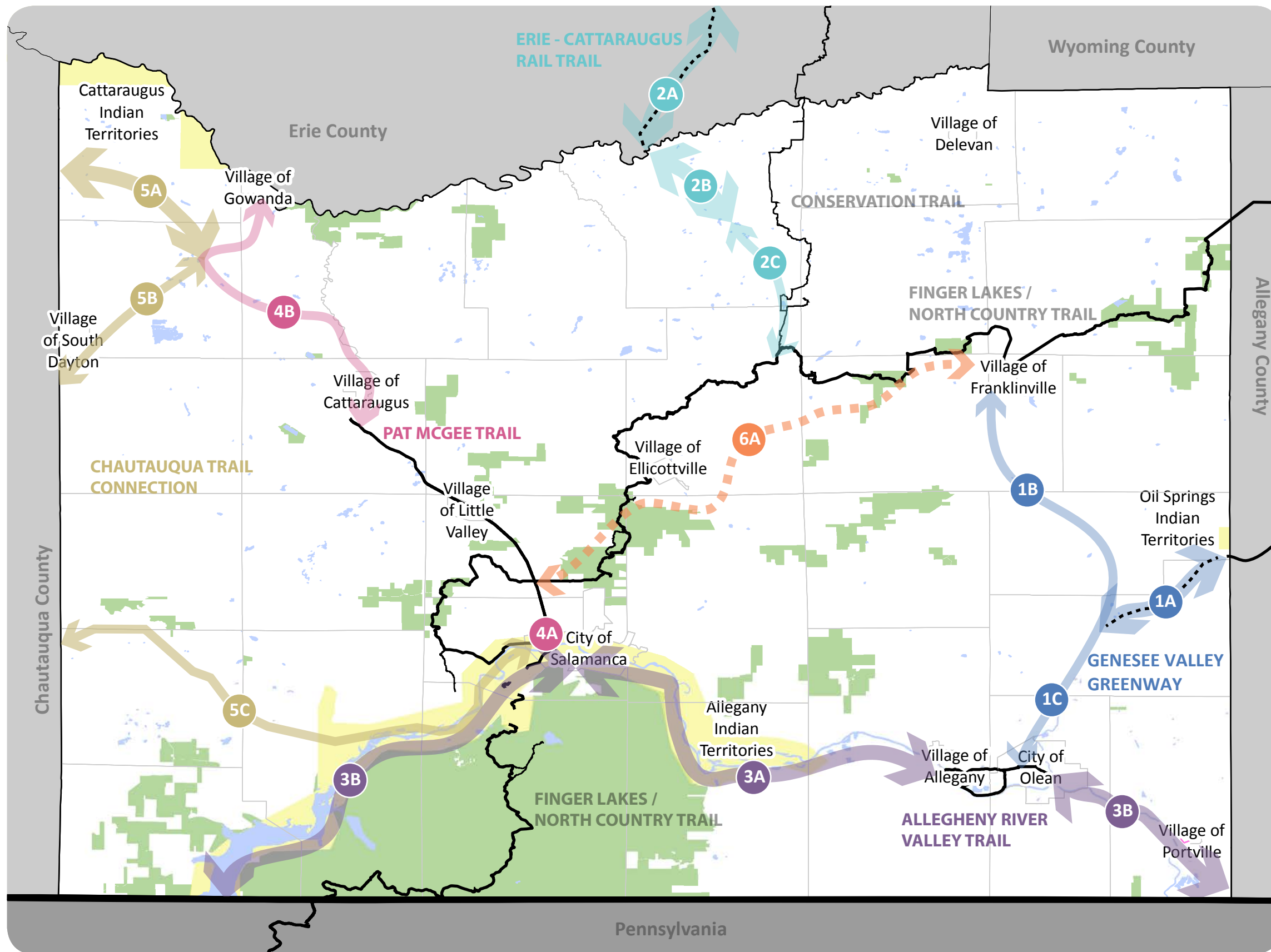
Recommendations for the Cattaraugus County Countywide Trail System Plan include:

- Improving and expanding ADA accessible, paved trails within the County, particularly in the Cities and Villages.
- Increasing the number of trail access points within the trail system and mapping existing trail access points.
- Developing connections between existing trails, including the Pat McGee Trail, Finger Lakes Trail, and trails within the State Park system.
- Connecting to the larger western New York trail network, including connections to Chautauqua Lake, Letchworth State Park, the Genesee Valley Greenway and Erie-Cattaraugus Rail-Trail.
- Developing a signage system to make trail wayfinding simple and to create a consistent identity for the Cattaraugus County Trail System.
- Providing additional mapping, both paper and digital, to make it easier for both tourists and residents to find trail access points and plan trail excursions.
- Creating events to increase public awareness of the trail system.
- Encouraging business developments in the Cities of Salamanca and Olean and Villages throughout the County to support tourism.
- Participating in the North Country Trail Association Trail Town program.

A full list of recommendations is included in Table 1 at the end of this executive summary.

IMPLEMENTATION

This section includes information regarding phasing, SEQRA documentation, the permitting process, and funding. Appendices are included that provide more detailed information on funding, the community impact of trails, potential areas of conflict between trail users, and sustainable trail construction.



CATTARAUGUS COUNTY TRAIL NETWORK

**FIGURE 1
POTENTIAL REGIONAL TRAIL CONNECTIONS**

- Existing Regional Trails
- Regional Trails Under Development
- Rail to Trail Opportunities
- Rail with Trail Opportunities
- Summer Multiuse - Snowmobile Trail Opportunity
- Park Boundaries
- Seneca Nation of Indians
- 1 Genesee Valley Greenway Connection
- 2 Erie Cattaraugus Rail - Trail Connection
- 3 Allegheny River Trail
- 4 Pat McGee Trail Extension
- 5 Chautauqua Trail Connection
- 6 Franklinville - Pat McGee Trail

Map Sources: NYS GIS Clearing House, Cattaraugus County GIS Services

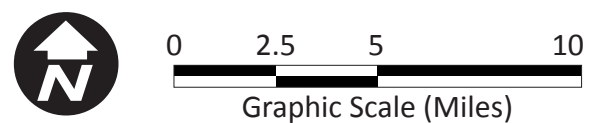




Table 1: Project Phasing

Project Name	Project Description	Priority Level
1. Genesee Valley Greenway Connection	a. Complete segment from Cuba NY in Allegany County to Hinsdale NY in Cattaraugus County along abandoned railway	Priority
	b. Trail connecting Genesee Valley Greenway in Hinsdale to Finger Lakes / North Country Trail in Franklinville, possible routes along active railway or existing snowmobile trail	Recommended
	c. Trail connecting Genesee Valley Greenway in Hinsdale to City of Olean, possible route along active railway	Recommended
2. Erie Cattaraugus Rail - Trail Connection	a. Support Erie- Cattaraugus Rail- Trail to complete proposed trail to County line (Town of Ashford) along abandoned railway	Priority
	b. Work with Erie Cattaraugus Rail- Trail to extend trail into Cattaraugus County along abandoned railway. Trail ends in Town of Ashford	Priority
	c. Create trail connecting Erie Cattaraugus Rail - Trail to Finger Lakes / North Country Trail & Conservation Trail. Possible route along active railway.	Priority
3. Allegheny River Trail	a. Expand and connect rail to trail projects along Allegheny River to create new major County trail from City of Salamanca to Village of Allegany / City of Olean along abandoned railway	Recommended
	b. Continue trail west from Pennsy trail and east from Allegheny River Valley Trail along abandoned railway to County line.	Possible
4. Pat McGee Trail Extension	a. Extend trail south to connect to City of Salamanca, Pennsy trail and Allegany State Park	Recommended
	b. Extend trail north to connect to Village of Gowanda and Zoar MUA, possible route along active railway	Recommended



CATTARAUGUS COUNTY
COUNTYWIDE TRAIL SYSTEM PLAN



Project Name	Project Description	Priority Level
5. Chautauqua Trail Connection	a. Connection from northern edge of Pat McGee trail to Town of Perrysburg and Chautauqua County border, possible route along active railway	Possible
	b. Connection from northern edge of Pat McGee trail to Village of South Dayton and Chautauqua County border, possible route along active railway	Possible
	c. Connection from southern edge of Pat McGee trail to Town of Randolph and Chautauqua County border, possible route along active railway	Possible
6. Multiuse Trail from Village of Franklinville to Pat McGee Trail	a. New multiuse trail connecting Franklinville, Ellicottville trail system and the Pat McGee Trail, possible route along existing snowmobile trail	Possible
7. Support State Park Trail Development Efforts	a. Support State Parks and Conservation Areas to develop proposed trails including Quaker Area Bikeway in Allegany State Park	Recommended
8. All Terrain Vehicles	a. Provide information about existing ATV trails on County trail maps, and County tourism website	Recommended
	b. Expand key snowmobile trails for summer ATV use	Possible
9. Existing Trail Improvements	a. More ADA accessible, paved trails including widening the Allegheny River Valley Trail and paving the Pat McGee Trail	Possible
	b. Winter maintenance of ADA accessible trails	Possible
	c. Increased general maintenance	Possible

CATTARAUGUS COUNTY
COUNTYWIDE TRAIL SYSTEM PLAN



Project Name	Project Description	Priority Level
10. Trail Access Improvements	a. Map any unidentified trail access points	Priority
	b. Include additional seating, restrooms and drinking fountains on longer and more popular trails	Recommended
	c. Provide separated equestrian parking areas at trails that allow equestrian use	Recommended
11. Signage	a. Create a comprehensive signage system using consistent graphics, colors and materials for all trails within Cattaraugus County trail system	Priority
12. Mapping	a. Update Trail Viewer to reflect current trail data	Priority
	b. Include trail difficulty and ADA accessibility in County trail mapping	Priority
	c. Include trail access points in County trail mapping	Priority
	d. Add trail businesses and points of interest to County trail mapping	Recommended
	e. Coordinate all County websites related to trails to provide links between related trail information	Priority
	f. Include Trail Viewer Map in County download-able GIS map viewer application	Priority
13. Marketing and Events	a. Plan multi-day trail events	Recommended



CATTARAUGUS COUNTY
COUNTYWIDE TRAIL SYSTEM PLAN



Project Name	Project Description	Priority Level
14. Village and Business Development Opportunities	a. Incorporate guidelines from 'Economic Development Strategy' plan into municipal code for all cities and villages in Cattaraugus County	Possible
	b. Join North Country Trail Association Trail Towns Initiative	Recommended
15. Trail and Event Coordination	a. Fund a trail coordinator position for Cattaraugus County	Recommended



SENECA NATION

Cattaraugus County fosters current designated and undesignated trails as well as plans for future trails surrounding and/or connecting to portions of the Seneca Territories. However, once Nation boundaries are crossed land and water use policy, procedures, and laws fall fully under the authority of the Seneca Nation. The Nation will continue to ensure measures are taken to maintain and protect waters of and the lands within the Seneca Nation.

The Seneca Nation Community Planning and Development Department, and Department of Transportation are in the process of developing Nation specific plans for the establishment of multi-territory, multi-use trail systems. Once completed, plans will serve as guides for the future development, operation, and use of any trails within Nation boundaries. Users are subject to any and all Nation laws and land use policies.

For more information regarding the Seneca Nations trails contact the Department of Community Planning and Development or Department of Transportation at 716-945-1790 ext. 3469

